

Recombinant Human SELP protein, His-Avi-tagged

Cat. No. SELP-109H Lot. No. (See product label)

SPECIFICATION

Product Overview	Recombinant Human P-Selectin/CD62P Protein is expressed from mammalian with a poly-His and Avi tag at the C-terminal. It contains Trp 42 - Ala 771.
Species	Human
Source	HEK293
ProteinLength	It contains Trp 42 - Ala 771.
Description	Human P-Selectin (GMP-140, LECAM-3, PADGEM, CD62P), a member of the Selectin family, is a cell surface glycoprotein expressed by activated platelets and endothelial cells. A SLe(x)-type proteoglycan, which through high affinity, calcium-dependent interactions with E-, P- and L-selectins, mediates rapid rolling of leukocytes over vascular surfaces during the initial steps in inflammation.
Form	Supplied as 0.22um filtered solution in PBS (pH 7.4).
Molecular Mass	The Human P-Selectin/CD62P Protein has a calculated MW of 82.9kDa .As a result of glycosylation, the protein migrates as 100-120 kDa under reducing (R) condition (Bis-Tris PAGE).
Endotoxin	Less than 1EU per ug by the LAL method.
Purity	> 95% as determined by Bis-Tris PAGE; > 95% as determined by HPLC

 Tel: 1-631-559-9269 1-516-512-3133

 Email: info@creative-biomart.com  Fax: 1-631-938-8127

 45-1 Ramsey Road, Shirley, NY 11967, USA

Storage The product should be stored at -70°C. Please do not repeated freeze-thaw cycles.

Reconstitution It is recommended that sterile water be added to the vial to prepare a stock solution of 0.2 ug/ul. Centrifuge the vial at 4°C before opening to recover the entire contents.

GENE INFORMATION

Gene Name SELP selectin P (granule membrane protein 140kDa, antigen CD62) [Homo sapiens]

Official Symbol SELP

Synonyms CD62P antigen; CD62P; FLJ45155; GMP140; GRMP; PADGEM; PADGEMantigen CD62); PSEL; P-Selectin; selectin P (granule membrane protein 140kDa, antigen CD62); SELP

Gene ID 6403

mRNA Refseq NM_003005

Protein Refseq NP_002996

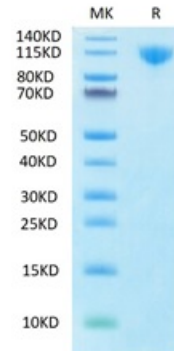
UniProt ID P16109

 Tel: 1-631-559-9269 1-516-512-3133

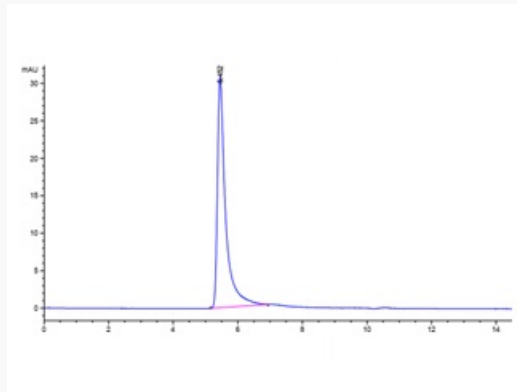
 Email: info@creative-biomart.com  Fax: 1-631-938-8127

 45-1 Ramsey Road, Shirley, NY 11967, USA

Tris-Bis PAGE



HPLC data



 Tel: 1-631-559-9269 1-516-512-3133

 Email: info@creative-biomart.com  Fax: 1-631-938-8127

 45-1 Ramsey Road, Shirley, NY 11967, USA