

## Recombinant Human SELP protein, His-Avi-tagged, Biotinylated

**Cat. No.** SELP-109HB    **Lot. No.** (See product label)

### SPECIFICATION

<b>Product Overview</b>	Biotinylated Recombinant Human SELP protein(P16109)(Trp42-Ala771), fused with C-terminal His and Avi tag, was expressed in HEK293.
<b>Species</b>	Human
<b>Source</b>	HEK293
<b>ProteinLength</b>	Trp42-Ala771
<b>Tag</b>	C-His-Avi
<b>Conjugation/Label</b>	Biotin
<b>Form</b>	Lyophilized from 0.22µm filtered solution in PBS (pH 7.4). Normally 5% saccharose is added as protectant before lyophilization.
<b>Bio-activity</b>	Immobilized Biotinylated Human P-Selectin, His Tag at 1ug/ml (100ul/Well) on streptavidin (5ug/ml) precoated plate. Dose response curve for Anti-P-Selectin Antibody, hFc Tag with the EC50 of 2.9ng/ml determined by ELISA.
<b>Molecular Mass</b>	The protein has a predicted MW of 82.9 kDa. Due to glycosylation, the protein migrates to 115-140 kDa based on Tris-Bis PAGE result.
<b>Endotoxin</b>	Less than 1EU per µg by the LAL method.

 Tel: 1-631-559-9269    1-516-512-3133

 Email: [info@creative-biomart.com](mailto:info@creative-biomart.com)     Fax: 1-631-938-8127

 45-1 Ramsey Road, Shirley, NY 11967, USA

<b>Purity</b>	> 95% as determined by Tris-Bis PAGE;> 95% as determined by HPLC
<b>Storage</b>	Reconstituted protein stable at -80°C for 12 months, 4°C for 1 week. Use a manual defrost freezer and avoid repeated freeze-thaw cycles.
<b>Reconstitution</b>	Centrifuge tubes before opening. Reconstituting to a concentration more than 100 µg/ml is recommended. Dissolve the lyophilized protein in distilled water.
<b>Conjugation</b>	Biotin

## GENE INFORMATION

<b>Gene Name</b>	SELP selectin P (granule membrane protein 140kDa, antigen CD62) [ Homo sapiens ]
<b>Official Symbol</b>	SELP
<b>Synonyms</b>	SELP; selectin P (granule membrane protein 140kDa, antigen CD62); GRMP, selectin P (granule membrane protein 140kD, antigen CD62); P-selectin; CD62; CD62P; GMP140; PADGEM; PSEL; GMP-140; granule membrane protein 140; granulocyte membrane protein; CD62 antigen-like family member P; platelet alpha-granule membrane protein; leukocyte-endothelial cell adhesion molecule 3; platelet activation dependent granule-external membrane protein; GRMP; LECAM3; FLJ45155;
<b>Gene ID</b>	6403
<b>mRNA Refseq</b>	NM_003005
<b>Protein Refseq</b>	NP_002996

 Tel: 1-631-559-9269 1-516-512-3133

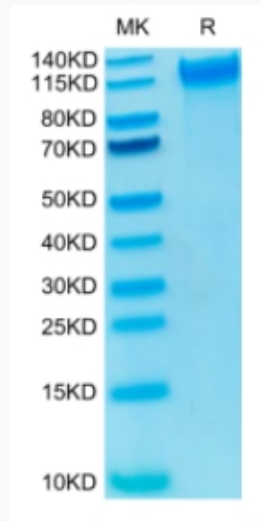
 Email: [info@creative-biomart.com](mailto:info@creative-biomart.com)  Fax: 1-631-938-8127

 45-1 Ramsey Road, Shirley, NY 11967, USA

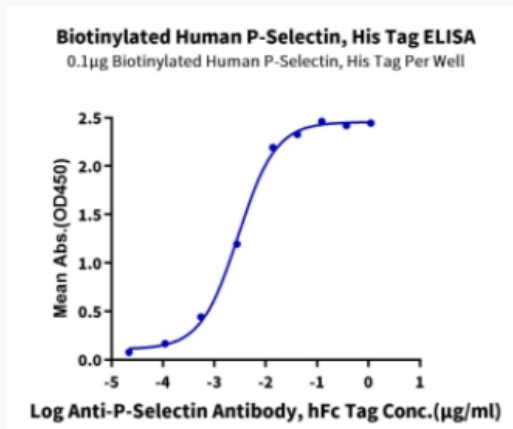
UniProt ID

P16109

Tris-Bis PAGE



ELISA Data



 Tel: 1-631-559-9269 1-516-512-3133

 Email: [info@creative-biomart.com](mailto:info@creative-biomart.com)  Fax: 1-631-938-8127

 45-1 Ramsey Road, Shirley, NY 11967, USA