

Recombinant Rabbit SELP Protein, His-tagged

Cat. No. SELP-1223R **Lot. No.** (See product label)

SPECIFICATION

Product Overview	Recombinant Rabbit SELP Protein (Val39-Glu195) with His tag was expressed in E. coli.
Species	Rabbit
Source	E.coli
ProteinLength	Val39-Glu195
Description	This gene encodes a 140 kDa protein that is stored in the alpha-granules of platelets and Weibel-Palade bodies of endothelial cells. This protein redistributes to the plasma membrane during platelet activation and degranulation and mediates the interaction of activated endothelial cells or platelets with leukocytes. The membrane protein is a calcium-dependent receptor that binds to sialylated forms of Lewis blood group carbohydrate antigens on neutrophils and monocytes. Alternative splice variants may occur but are not well documented.
Form	Freeze-dried powder
Molecular Mass	Predicted Molecular Mass: 22.2 kDa; Accurate Molecular Mass: 24 kDa
Purity	> 90%
Applications	Positive Control; Immunogen; SDS-PAGE; WB.

 Tel: 1-631-559-9269 1-516-512-3133

 Email: info@creative-biomart.com  Fax: 1-631-938-8127

 45-1 Ramsey Road, Shirley, NY 11967, USA

Stability	The thermal stability is described by the loss rate. The loss rate was determined by accelerated thermal degradation test, that is, incubate the protein at 37 centigrade for 48h, and no obvious degradation and precipitation were observed. The loss rate is less than 5% within the expiration date under appropriate storage condition.
Storage	Avoid repeated freeze/thaw cycles. Store at 2-8 centigrade for one month. Aliquot and store at -80 centigrade for 12 months.
Storage Buffer	PBS, pH7.4, containing 0.01% SKL, 1mM DTT, 5% Trehalose and Proclin300.
Reconstitution	Reconstitute in 20mM Tris, 150mM NaCl (pH8.0) to a concentration of 0.1-1.0 mg/mL. Do not vortex.

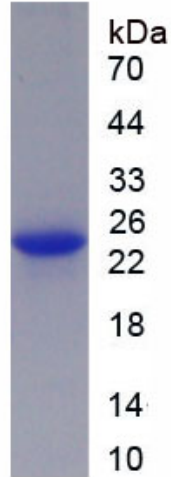
GENE INFORMATION

Gene Name	SELP selectin P (granule membrane protein 140kDa, antigen CD62) [<i>Oryctolagus cuniculus</i>]
Official Symbol	SELP
Synonyms	SELP; selectin P (granule membrane protein 140kDa, antigen CD62); P-selectin;
Gene ID	100009534
mRNA Refseq	NM_001082755
Protein Refseq	NP_001076224

 Tel: 1-631-559-9269 1-516-512-3133

 Email: info@creative-biomart.com  Fax: 1-631-938-8127

 45-1 Ramsey Road, Shirley, NY 11967, USA



Tel: 1-631-559-9269 1-516-512-3133

Email: info@creative-biomart.com Fax: 1-631-938-8127

45-1 Ramsey Road, Shirley, NY 11967, USA