

## Recombinant Human SELP protein, hFc-Myc-tagged

Cat. No. SELP-1528H Lot. No. (See product label)

### SPECIFICATION

<b>Product Overview</b>	Recombinant Human SELP protein(P16109)(42-771aa), fused to C-terminal hFc-Myc tag, was expressed in HEK293.
<b>Species</b>	Human
<b>Source</b>	HEK293
<b>ProteinLength</b>	42-771aa
<b>Form</b>	If the delivery form is liquid, the default storage buffer is Tris/PBS-based buffer, 5%-50% glycerol. If the delivery form is lyophilized powder, the buffer before lyophilization is Tris/PBS-based buffer, 6% Trehalose, pH 8.0.
<b>Molecular Mass</b>	108.8 kDa
<b>Purity</b>	Greater than 90% as determined by SDS-PAGE.
<b>Storage</b>	Store at -20°C/-80°C upon receipt, aliquoting is necessary for mutiple use. Avoid repeated freeze-thaw cycles.
<b>Reconstitution</b>	It is recommended that sterile water be added to the vial to prepare a stock solution of 0.2 ug/ul. Centrifuge the vial at 4°C before opening to recover the entire contents.

### GENE INFORMATION

 Tel: 1-631-559-9269 1-516-512-3133

 Email: [info@creative-biomart.com](mailto:info@creative-biomart.com)  Fax: 1-631-938-8127

 45-1 Ramsey Road, Shirley, NY 11967, USA

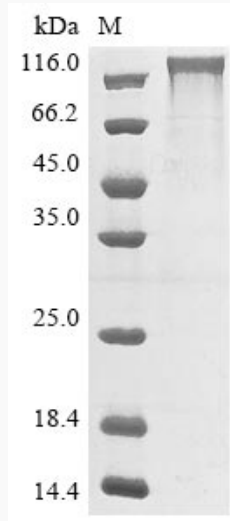
<b>Gene Name</b>	SELP selectin P (granule membrane protein 140kDa, antigen CD62) [ Homo sapiens ]
<b>Official Symbol</b>	SELP
<b>Synonyms</b>	SELP; selectin P (granule membrane protein 140kDa, antigen CD62); GRMP, selectin P (granule membrane protein 140kD, antigen CD62); P-selectin; CD62; CD62P; GMP140; PADGEM; PSEL; GMP-140; granule membrane protein 140; granulocyte membrane protein; CD62 antigen-like family member P; platelet alpha-granule membrane protein; leukocyte-endothelial cell adhesion molecule 3; platelet activation dependent granule-external membrane protein; GRMP; LECAM3; FLJ45155;
<b>Gene ID</b>	6403
<b>mRNA Refseq</b>	NM_003005
<b>Protein Refseq</b>	NP_002996
<b>UniProt ID</b>	P16109

 Tel: 1-631-559-9269 1-516-512-3133

 Email: [info@creative-biomart.com](mailto:info@creative-biomart.com)  Fax: 1-631-938-8127

 45-1 Ramsey Road, Shirley, NY 11967, USA

**SDS-PAGE**



 Tel: 1-631-559-9269 1-516-512-3133

 Email: [info@creative-biomart.com](mailto:info@creative-biomart.com)  Fax: 1-631-938-8127

 45-1 Ramsey Road, Shirley, NY 11967, USA