

Recombinant Human SELP protein, Fc-tagged

Cat. No. SELP-208H Lot. No. (See product label)

SPECIFICATION

Product Overview	Recombinant Human SELP (Trp42-Ala771) protein was fused to human IgG1 Fc tag at C-terminus and expressed in human 293 cells (HEK293).
Species	Human
Source	HEK293
ProteinLength	Trp42-Ala771
Description	<p>P-selectin (SELP) is also known as CD62 antigen-like family member P, granule membrane protein 140 (GMP-140), leukocyte-endothelial cell adhesion molecule 3 (LECAM3) and platelet activation dependent granule-external membrane protein (PADGEM). SELP functions as a cell adhesion molecule (CAM) on the surfaces of activated endothelial cells, which line the inner surface of blood vessels, and activated platelets. In unactivated endothelial cells, it is stored in granules called Weibel-Palade bodies. In unactivated platelets SELP is stored in α-granules. The primary ligand for SELP is P-selectin glycoprotein ligand-1 (PSGL-1) which is expressed on almost all leukocytes, although P-selectin also binds to heparan sulfate and fucoidan. Furthermore, SELP has a functional role in metastasis of tumor similar to E-selectin, which can help cancer cells invade into bloodstream for metastasis and provided locally with multiple growth factors respectively.</p>
Predicted N Terminal	Trp42
Form	Lyophilized from 0.22

 Tel: 1-631-559-9269 1-516-512-3133

 Email: info@creative-biomart.com  Fax: 1-631-938-8127

 45-1 Ramsey Road, Shirley, NY 11967, USA

	µm filtered solution in Tris with Glycine, Arginine and NaCl, pH7.5, 10% trehalose.
Molecular Mass	The protein has a calculated MW of 106.6 kDa. The protein migrates as 146-160 kDa under reducing (R) condition (SDS-PAGE) due to Glycosylation.
Endotoxin	Less than 1.0 EU per µg by the LAL method.
Purity	>95% as determined by SDS-PAGE.
Storage	For long term storage, the product should be stored at lyophilized state at -20 centigrade or lower. Please avoid repeated freeze-thaw cycles. This product is stable after storage at: -20 to -70 centigrade for 12 months in lyophilized state; -70 centigrade for 3 months under sterile conditions after reconstitution.
Reconstitution	It is recommended that sterile water be added to the vial to prepare a stock solution of 0.2 ug/ul. Centrifuge the vial at 4°C before opening to recover the entire contents.

GENE INFORMATION

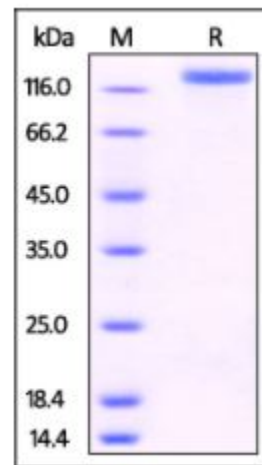
Gene Name	SELP
Official Symbol	SELP
Synonyms	SELP; selectin P (granule membrane protein 140kDa, antigen CD62); GRMP, selectin P (granule membrane protein 140kD, antigen CD62); P-selectin; CD62; CD62P; GMP140; PADGEM; PSEL; GMP-140; granule membrane protein 140; granulocyte membrane protein; CD62 antigen-like family member P; platelet alpha-granule membrane protein; leukocyte-endothelial cell adhesion molecule 3; platelet activation dependent granule-external membrane protein; GRMP; LECAM3;

 Tel: 1-631-559-9269 1-516-512-3133

 Email: info@creative-biomart.com  Fax: 1-631-938-8127

 45-1 Ramsey Road, Shirley, NY 11967, USA

FLJ45155

Gene ID 6403**mRNA Refseq** NM_003005**Protein Refseq** NP_002996**MIM** 173610**UniProt ID** P16109**SDS-PAGE of SELP-208H**

Human P-Selectin, Fc Tag on SDS-PAGE under reducing (R) condition. The gel was stained overnight with Coomassie Blue. The purity of the protein is greater than 95%.

 Tel: 1-631-559-9269 1-516-512-3133 Email: info@creative-biomart.com  Fax: 1-631-938-8127 45-1 Ramsey Road, Shirley, NY 11967, USA