

Recombinant Human SELP protein, His-tagged

Cat. No. SELP-2584H **Lot. No.** (See product label)

SPECIFICATION

| | |
|-------------------------|---|
| Product Overview | Recombinant Human SELP aa. (Lys58~Glu195 (Accession # P16109)) fused with N-terminal His tag was produced in E. coli cells. |
| Species | Human |
| Source | E.coli |
| ProteinLength | Lys58~Glu195 |
| Description | This gene encodes a 140 kDa protein that is stored in the alpha-granules of platelets and Weibel-Palade bodies of endothelial cells. This protein redistributes to the plasma membrane during platelet activation and degranulation and mediates the interaction of activated endothelial cells or platelets with leukocytes. The membrane protein is a calcium-dependent receptor that binds to sialylated forms of Lewis blood group carbohydrate antigens on neutrophils and monocytes. Alternative splice variants may occur but are not well documented. |
| Form | Freeze-dried powder |
| Molecular Mass | Predicted Molecular Mass: 17.6kDa |
| Endotoxin | <1.0EU per 1g (determined by the LAL method) |
| Purity | >95% |

 Tel: 1-631-559-9269 1-516-512-3133

 Email: info@creative-biomart.com  Fax: 1-631-938-8127

 45-1 Ramsey Road, Shirley, NY 11967, USA

| | |
|-----------------------|---|
| Characteristic | The isoelectric point is 6.7. |
| Applications | SDS-PAGE; WB; ELISA; IP |
| Stability | The thermal stability is described by the loss rate. The loss rate was determined by accelerated thermal degradation test, that is, incubate the protein at 37°C for 48h, and no obvious degradation and precipitation were observed. The loss rate is less than 5% within the expiration date under appropriate storage condition. |
| Storage | Avoid repeated freeze/thaw cycles. Store at 2-8°C for one month. Aliquot and store at -80°C for 12 months. |
| Storage buffer | Supplied as lyophilized form in PBS, pH7.4, containing 5% trehalose, 0.01% sarcosyl. |
| Reconstitution | Reconstitute in sterile PBS, pH7.2-pH7.4 |

GENE INFORMATION

| | |
|------------------------|--|
| Gene Name | SELP selectin P [<i>Homo sapiens</i> (human)] |
| Official Symbol | SELP |
| Synonyms | SELP; selectin P; CD62; GRMP; PSEL; CD62P; GMP140; LECAM3; PADGEM; P-selectin; CD62 antigen-like family member P; GMP-140; granule membrane protein 140; granule membrane protein 140kDa; granulocyte membrane protein; leukocyte-endothelial cell adhesion molecule 3; platelet activation dependent granule-external membrane protein; platelet alpha-granule membrane protein; selectin P (granule membrane protein 140kDa, antigen CD62) |
| Gene ID | 6403 |

 Tel: 1-631-559-9269 1-516-512-3133

 Email: info@creative-biomart.com  Fax: 1-631-938-8127

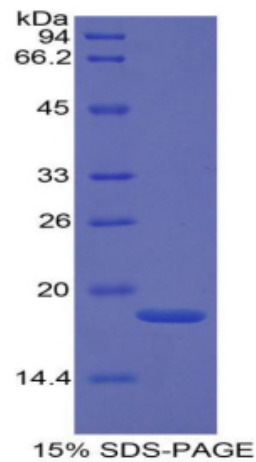
 45-1 Ramsey Road, Shirley, NY 11967, USA

mRNA Refseq [NM_003005.3](#)

Protein Refseq [NP_002996.2](#)

UniProt ID [P16109](#)

SDS-PAGE



 Tel: 1-631-559-9269 1-516-512-3133

 Email: info@creative-biomart.com  Fax: 1-631-938-8127

 45-1 Ramsey Road, Shirley, NY 11967, USA