

Recombinant Human SELP Protein, Myc/DDK-tagged, C13 and N15-labeled

Cat. No. SELP-3078H **Lot. No.** (See product label)

SPECIFICATION

Product Overview	SELP MS Standard C13 and N15-labeled recombinant protein (NP_002996) with a C-terminal MYC/DDK tag, was expressed in HEK293 cells.
Species	Human
Source	HEK293
Description	This gene encodes a 140 kDa protein that is stored in the alpha-granules of platelets and Weibel-Palade bodies of endothelial cells. This protein redistributes to the plasma membrane during platelet activation and degranulation and mediates the interaction of activated endothelial cells or platelets with leukocytes. The membrane protein is a calcium-dependent receptor that binds to sialylated forms of Lewis blood group carbohydrate antigens on neutrophils and monocytes. Alternative splice variants may occur but are not well documented.
Molecular Mass	90.8 kDa
AA Sequence	MANCQIAILYQRFQRVVFVFGISQLLFCFSALISELTNQKEVAAWTYHYSTKAYSWNISRK YCQNRYTDLVAIQNKNEIDYLNKVLPPYSSYYWIGIRKNNKTWTWVGTKKALTNEAE NWADNEPNKRNNEDCVEIYIKSPSAPGKWNDHCLKKKHALCYTASCQDMSCSK QGECLETIGNYTCSCYPGFYGPCEYVRECGELELPQHVLNCSHPLGNFSFNSQ CSFHCTDGYQVNGPSKLECLASGIWTNKPPQCLAAQCPLKIPERGNMTCLHSAKA FQHQSSCSFSCEEGFALVGPEVVQCTASGVWTAPAPVCKAVQCQHLEAPSEGTM

 Tel: 1-631-559-9269 1-516-512-3133

 Email: info@creative-biomart.com  Fax: 1-631-938-8127

 45-1 Ramsey Road, Shirley, NY 11967, USA

CVHPLTAFAYGSSCKFECQPGYRVRGLDMLRCIDSGHWSAPLPTCEAISCEPLESP
 VHGSMDCSPSLRAFQYDTNCSFRCAEGFMLRGADIVRCDNLGQWTAPAPVCQALQ
 CQDLVPNEARVNCSHPFGAFRYQSVCSFTCNEGLLLVGASVLQCLATGNWNSVP
 PECQAIPCTPLLSPQNGTMTCVRPLGSSSYKSTCQFICDEGYSLSGPERLDCTRSG
 RWTDSPPMCEAIKCPELFAPEQGSLLDCSDTRGEFNVGSTCHFSCNNGFKLEGPNN
 VECTTSGRWSATPPTCKGIASLPTPGVQCALTTPGQGTMYCRHHPGTFGFNTTCY
 FGCNAGFTLIGDSTLSCRPSGQWTAVTPACRAVKCSELHVNKPIAMNCSNLWGNFS
 YGSICSFHCLEGQLLNGSAQTACQENHWSTTVPTCQGPLTIQEALTYFGGAVASTI
 GLIMGGTLLALLRKRFRQKDDGKCPLNPHSHLGTYGVFTNAAFDPSPTRTRPLEQKL
 ISEEDLAANDILDYKDDDDKV

Purity > 80% as determined by SDS-PAGE and Coomassie blue staining

Stability Stable for 3 months from receipt of products under proper storage and handling conditions.

Storage Store at -80 centigrade. Avoid repeated freeze-thaw cycles.

Concentration 50 µg/mL as determined by BCA

Storage Buffer 100 mM glycine, 25 mM Tris-HCl, pH 7.3.

GENE INFORMATION

Gene Name SELP selectin P [*Homo sapiens* (human)]

Official Symbol SELP

Synonyms SELP; selectin P (granule membrane protein 140kDa, antigen CD62); GRMP, selectin P (granule membrane protein 140kD, antigen CD62); P-selectin; CD62; CD62P; GMP140; PADGEM; PSEL; GMP-140; granule membrane protein 140;

 Tel: 1-631-559-9269 1-516-512-3133

 Email: info@creative-biomart.com  Fax: 1-631-938-8127

 45-1 Ramsey Road, Shirley, NY 11967, USA

granulocyte membrane protein; CD62 antigen-like family member P; platelet alpha-granule membrane protein; leukocyte-endothelial cell adhesion molecule 3; platelet activation dependent granule-external membrane protein; GRMP; LECAM3; FLJ45155;

Gene ID 6403

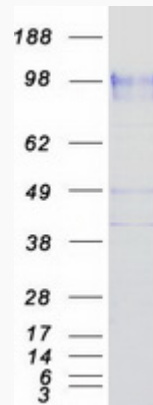
mRNA Refseq NM_003005

Protein Refseq NP_002996

MIM 173610

UniProt ID P16109

SDS-PAGE



 Tel: 1-631-559-9269 1-516-512-3133

 Email: info@creative-biomart.com  Fax: 1-631-938-8127

 45-1 Ramsey Road, Shirley, NY 11967, USA