

# Recombinant Human SELP Protein (Trp42-Aal771), C-hFc-tagged

**Cat. No.** SELP-387H    **Lot. No.** (See product label)

## SPECIFICATION

<b>Product Overview</b>	Recombinant Human SELP Protein (Trp42-Aal771) with C-hFc tag was expressed in HEK293.
<b>Species</b>	Human
<b>Source</b>	HEK293
<b>ProteinLength</b>	Trp42-Aal771
<b>Description</b>	This gene encodes a 140 kDa protein that is stored in the alpha-granules of platelets and Weibel-Palade bodies of endothelial cells. This protein redistributes to the plasma membrane during platelet activation and degranulation and mediates the interaction of activated endothelial cells or platelets with leukocytes. The membrane protein is a calcium-dependent receptor that binds to sialylated forms of Lewis blood group carbohydrate antigens on neutrophils and monocytes. Alternative splice variants may occur but are not well documented.
<b>Form</b>	Lyophilized
<b>Molecular Mass</b>	106.1 kDa
<b>Purity</b>	> 95% as determined by SDS-PAGE and Coomassie blue staining.
<b>Storage</b>	Store at -80 centigrade for 12 months (Avoid repeated freezing and thawing)

 Tel: 1-631-559-9269    1-516-512-3133

 Email: [info@creative-biomart.com](mailto:info@creative-biomart.com)     Fax: 1-631-938-8127

 45-1 Ramsey Road, Shirley, NY 11967, USA

**Storage Buffer** Lyophilized from sterile PBS, pH 7.4. Normally 5 % - 67 % trehalose is added as protectants before lyophilization.

## GENE INFORMATION

**Gene Name** SELP selectin P (granule membrane protein 140kDa, antigen CD62) [ Homo sapiens (human) ]

**Official Symbol** SELP

**Synonyms** SELP; selectin P (granule membrane protein 140kDa, antigen CD62); GRMP, selectin P (granule membrane protein 140kD, antigen CD62); P-selectin; CD62; CD62P; GMP140; PADGEM; PSEL; GMP-140; granule membrane protein 140; granulocyte membrane protein; CD62 antigen-like family member P; platelet alpha-granule membrane protein; leukocyte-endothelial cell adhesion molecule 3; platelet activation dependent granule-external membrane protein; GRMP; LECAM3; FLJ45155;

**Gene ID** 6403

**mRNA Refseq** NM\_003005

**Protein Refseq** NP\_002996

**MIM** 173610

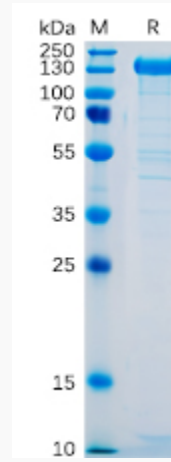
**UniProt ID** P16109

 Tel: 1-631-559-9269 1-516-512-3133

 Email: [info@creative-biomart.com](mailto:info@creative-biomart.com)  Fax: 1-631-938-8127

 45-1 Ramsey Road, Shirley, NY 11967, USA

**SDS-PAGE**



 Tel: 1-631-559-9269 1-516-512-3133

 Email: [info@creative-biomart.com](mailto:info@creative-biomart.com)  Fax: 1-631-938-8127

 45-1 Ramsey Road, Shirley, NY 11967, USA