

## Recombinant Human SELP protein, His-tagged

Cat. No. SELP-474H Lot. No. (See product label)

### SPECIFICATION

<b>Product Overview</b>	Recombinant Human SELP (Trp42-Ala771) protein was fused to His-tag at C-terminus and expressed in human 293 cells (HEK293).
<b>Species</b>	Human
<b>Source</b>	HEK293
<b>ProteinLength</b>	Trp42-Ala771
<b>Description</b>	<p>P-selectin (SELP) is also known as CD62 antigen-like family member P, granule membrane protein 140 (GMP-140), leukocyte-endothelial cell adhesion molecule 3 (LECAM3) and platelet activation dependent granule-external membrane protein (PADGEM). SELP functions as a cell adhesion molecule (CAM) on the surfaces of activated endothelial cells, which line the inner surface of blood vessels, and activated platelets. In unactivated endothelial cells, it is stored in granules called Weibel-Palade bodies. In unactivated platelets SELP is stored in <math>\alpha</math>-granules. The primary ligand for SELP is P-selectin glycoprotein ligand-1 (PSGL-1) which is expressed on almost all leukocytes, although P-selectin also binds to heparan sulfate and fucoidan. Furthermore, SELP has a functional role in metastasis of tumor similar to E-selectin, which can help cancer cells invade into bloodstream for metastasis and provided locally with multiple growth factors respectively.</p>
<b>Predicted N Terminal</b>	Trp42
<b>Form</b>	Lyophilized from 0.22

 Tel: 1-631-559-9269 1-516-512-3133

 Email: [info@creative-biomart.com](mailto:info@creative-biomart.com)  Fax: 1-631-938-8127

 45-1 Ramsey Road, Shirley, NY 11967, USA

	µm filtered solution in PBS, pH7.4, 10% trehalose.
<b>Molecular Mass</b>	The protein has a calculated MW of 81.8 kDa. The protein migrates as 110-125 kD under reducing (R) condition (SDS-PAGE) due to glycosylation.
<b>Endotoxin</b>	Less than 1.0 EU per µg by the LAL method.
<b>Purity</b>	>95% as determined by SDS-PAGE.
<b>Storage</b>	For long term storage, the product should be stored at lyophilized state at -20 centigrade or lower. Please avoid repeated freeze-thaw cycles. This product is stable after storage at: -20 to -70 centigrade for 12 months in lyophilized state; -70 centigrade for 3 months under sterile conditions after reconstitution.
<b>Reconstitution</b>	It is recommended that sterile water be added to the vial to prepare a stock solution of 0.2 ug/ul. Centrifuge the vial at 4°C before opening to recover the entire contents.

## GENE INFORMATION

<b>Gene Name</b>	<b>SELP</b>
<b>Official Symbol</b>	<b>SELP</b>
<b>Synonyms</b>	SELP; selectin P (granule membrane protein 140kDa, antigen CD62); GRMP, selectin P (granule membrane protein 140kD, antigen CD62); P-selectin; CD62; CD62P; GMP140; PADGEM; PSEL; GMP-140; granule membrane protein 140; granulocyte membrane protein; CD62 antigen-like family member P; platelet alpha-granule membrane protein; leukocyte-endothelial cell adhesion molecule 3; platelet activation dependent granule-external membrane protein; GRMP; LECAM3;

 Tel: 1-631-559-9269 1-516-512-3133

 Email: [info@creative-biomart.com](mailto:info@creative-biomart.com)  Fax: 1-631-938-8127

 45-1 Ramsey Road, Shirley, NY 11967, USA

FLJ45155

**Gene ID** 6403

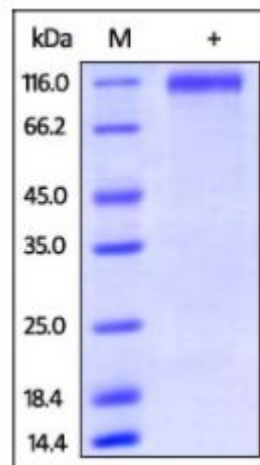
**mRNA Refseq** NM\_003005

**Protein Refseq** NP\_002996

**MIM** 173610

**UniProt ID** P16109

**SDS-PAGE of SELP-474H**



Human P-Selectin, His Tag on SDS-PAGE under reducing (R) condition. The gel was stained overnight with Coomassie Blue. The purity of the protein is greater than 95%.

 Tel: 1-631-559-9269 1-516-512-3133

 Email: [info@creative-biomart.com](mailto:info@creative-biomart.com)  Fax: 1-631-938-8127

 45-1 Ramsey Road, Shirley, NY 11967, USA