

Recombinant Human SELP Protein (Met1-Ala771), C-His tagged

Cat. No. SELP-5085H Lot. No. (See product label)

SPECIFICATION

Product Overview	Recombinant human SELP (Met1-Ala771) fused with the C-terminal His tag was expressed in Mammalian cells.
Species	Human
Source	Mammalian Cells
ProteinLength	Met1-Ala771
Form	Lyophilized powder/frozen liquid
Molecular Mass	84.92 kDa
Endotoxin	< 1.0 EU/μg of the protein as determined by the LAL method.
Purity	>90% as determined by SDS-PAGE.
Notes	For research use only.
Storage	Use a manual defrost freezer and avoid repeated freeze thaw cycles. Store at 2 to 8 centigrade for one week. Store at -20 to -80 centigrade for twelve months from the date of receipt.
Storage Buffer	Supplied as solution form in PBS or lyophilized from PBS.

 Tel: 1-631-559-9269 1-516-512-3133

 Email: info@creative-biomart.com  Fax: 1-631-938-8127

 45-1 Ramsey Road, Shirley, NY 11967, USA

Reconstitution Reconstitute in sterile water for a stock solution.

Shipping They are shipped out with dry ice/blue ice unless customers require otherwise.

GENE INFORMATION

Gene Name SELP selectin P (granule membrane protein 140kDa, antigen CD62) [Homo sapiens (human)]

Official Symbol SELP

Synonyms SELP; selectin P (granule membrane protein 140kDa, antigen CD62); GRMP, selectin P (granule membrane protein 140kD, antigen CD62); P-selectin; CD62; CD62P; GMP140; PADGEM; PSEL; GMP-140; granule membrane protein 140; granulocyte membrane protein; CD62 antigen-like family member P; platelet alpha-granule membrane protein; leukocyte-endothelial cell adhesion molecule 3; platelet activation dependent granule-external membrane protein; GRMP; LECAM3; FLJ45155;

Gene ID 6403

mRNA Refseq NM_003005

Protein Refseq NP_002996

MIM 173610

UniProt ID P16109

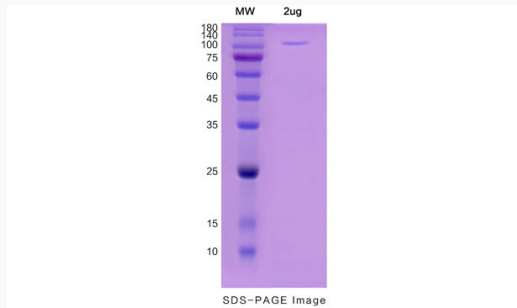
 Tel: 1-631-559-9269 1-516-512-3133

 Email: info@creative-biomart.com  Fax: 1-631-938-8127

 45-1 Ramsey Road, Shirley, NY 11967, USA



SDS-PAGE



Tel: 1-631-559-9269 1-516-512-3133

Email: info@creative-biomart.com Fax: 1-631-938-8127

45-1 Ramsey Road, Shirley, NY 11967, USA