

Recombinant Human selectin P ligand Protein, His tagged

Cat. No. SELPLG-001H Lot. No. (See product label)

SPECIFICATION

Product Overview	Recombinant human selectin P ligand Protein (44-295 aa) with His tag was expressed in HEK293.
Species	Human
Source	HEK293
ProteinLength	44-295aa
Description	This gene encodes a glycoprotein that functions as a high affinity counter-receptor for the cell adhesion molecules P-, E- and L- selectin expressed on myeloid cells and stimulated T lymphocytes. As such, this protein plays a critical role in leukocyte trafficking during inflammation by tethering of leukocytes to activated platelets or endothelia expressing selectins. This protein requires two post-translational modifications, tyrosine sulfation and the addition of the sialyl Lewis x tetrasaccharide (sLex) to its O-linked glycans, for its high-affinity binding activity. Aberrant expression of this gene and polymorphisms in this gene are associated with defects in the innate and adaptive immune response. Alternate splicing results in multiple transcript variants.
Tag	C-His
Molecular Mass	27 kDa
AA Sequence	TEYEYLDYDFLPETEPPEMLRNSTDTTPLTGPGTPESTTVEPAARRSTGLDAGGAVT

 Tel: 1-631-559-9269 1-516-512-3133

 Email: info@creative-biomart.com  Fax: 1-631-938-8127

 45-1 Ramsey Road, Shirley, NY 11967, USA

ELTTELANMGNLSTDSAAMEIQTTQPAATEAQTTPVPTEAQTTPLAATEAQTTRLT
 ATEAQTTPLAATEAQTTPPAATEAQTTPQPTGLEAQTTPAAMEAQTTPAAMEAQT
 TPPAAMEAQTTPQTTAMEAQTTPAPEATEAQTTPQPTATEAQTTPLAAMEALSTEPSAT
 EALSMEPTTKRGLFIPFSVSSVTHKGHHHHHHHH

Endotoxin < 1 EU/μg of protein (determined by LAL method)

Purity > 85% by SDS-PAGE

Storage Store it under sterile conditions at -20 to -80 centigrade. It is recommended that the protein be aliquoted for optimal storage. Avoid repeated freeze-thaw cycles.

Storage Buffer Sterile PBS, pH 7.4

Concentration 1 mg/mL by BCA

GENE INFORMATION

Gene Name SELPLG selectin P ligand [Homo sapiens (human)]

Official Symbol SELPLG

Synonyms SELPLG; selectin P ligand; P-selectin glycoprotein ligand 1; CD162; PSGL 1; cutaneous lymphocyte-associated associated antigen; CLA; PSGL1; PSGL-1;

Gene ID 6404

mRNA Refseq NM_001206609

Protein Refseq NP_001193538

 Tel: 1-631-559-9269 1-516-512-3133

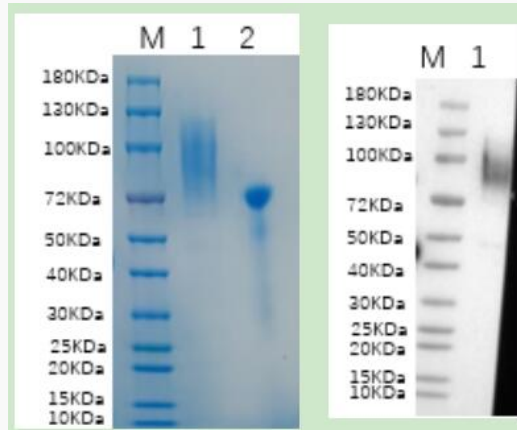
 Email: info@creative-biomart.com  Fax: 1-631-938-8127

 45-1 Ramsey Road, Shirley, NY 11967, USA

MIM 600738

UniProt ID Q14242

Reducing 4%-20%
SDS-PAGE (CBB
stained) and WB
(Anti-His Mouse
Monoclonal
antibody) analysis
profiles of purified
SELPLG.



1. SELPLG
2. BSA

 Tel: 1-631-559-9269 1-516-512-3133

 Email: info@creative-biomart.com  Fax: 1-631-938-8127

 45-1 Ramsey Road, Shirley, NY 11967, USA