

## Recombinant Human SELPLG Protein, C-His-tagged

Cat. No. SELPLG-129H Lot. No. (See product label)

### SPECIFICATION

<b>Product Overview</b>	Recombinant Human SELPLG Protein with C-His tag was expressed in E. coli.
<b>Species</b>	Human
<b>Source</b>	E.coli
<b>Description</b>	<p>PSGL-1 (P-Selectin glycoprotein ligand, also designated CD162), exists as a disulfide-linked homodimer. PSGL-1 is a type 1 membrane protein that localizes on the tips of microvilli of leukocytes. Its extracellular domain is rich in serines, threonines and prolines, and includes a series of 15 and 16 ecameric repeats in HL-60 and U-937 cells, and human leukocytes, respectively. Although PSGL-1 appears to be the sole receptor for P-Selectin on human hematopoietic cells, it also interacts with E-Selectin through a unique binding site. In order to bind PSGL-1 to either E-Selectin or P-Selectin, PSGL-1 must be sialylated and fucosylated. PSLG-1 is a mucin-like molecule, much like leukosialin (CD43), CD164 and CD34. These proteins belong to an emerging family of cell adhesion receptors called sialomucins, which transduce negative signals in hematopoietic cells.</p>
<b>Molecular Mass</b>	~31 kDa
<b>AA Sequence</b>	<p>QATEYEYLDYDFLPETEPPEMLRNSTDTTPLTGPGTPESTTVEPAARRSTGLDAGG  AVTELTTELANMGNLSTDSAAMEIQTTQPAATEAQTTQPVPTEAQTTPLAATEAQTT  RLTATEAQTTPLAATEAQTTPPAATEAQTTQPTGLEAQTTAPAAMEAQTTAPAAMEA  QTTPPAAMEAQTTQTTAMEAQTTAPEATEAQTTQPTATEAQTTPLAAMEALSTEPS</p>

 Tel: 1-631-559-9269 1-516-512-3133

 Email: [info@creative-biomart.com](mailto:info@creative-biomart.com)  Fax: 1-631-938-8127

 45-1 Ramsey Road, Shirley, NY 11967, USA

ATEALSMEPTTKRGLFIPFSVSSVTHKGIPMAASNLSVNYPVGAPDHISVKQC

**Purity**

Transferred into competent cells and the supernatant was purified by NI column affinity chromatography and the purity is > 85% (by SDS-PAGE).

**Notes**

For research use only, not for use in diagnostic procedure.

**Storage**

Store at 4 centigrade short term. Aliquot and store at -20 centigrade long term. Avoid freeze-thaw cycles.

**Concentration**

≥0.5 mg/mL

**Storage Buffer**

PBS, 4M Urea, pH7.4

## GENE INFORMATION

**Gene Name**

SELPLG selectin P ligand [ Homo sapiens (human) ]

**Official Symbol**

SELPLG

**Synonyms**

SELPLG; selectin P ligand; P-selectin glycoprotein ligand 1; CD162; PSGL 1; cutaneous lymphocyte-associated associated antigen; CLA; PSGL1; PSGL-1;

**Gene ID**

6404

**mRNA Refseq**

NM\_001206609

**Protein Refseq**

NP\_001193538

**MIM**

600738

 Tel: 1-631-559-9269 1-516-512-3133

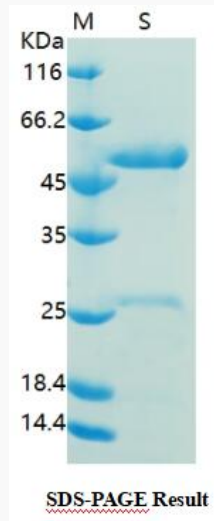
 Email: [info@creative-biomart.com](mailto:info@creative-biomart.com)  Fax: 1-631-938-8127

 45-1 Ramsey Road, Shirley, NY 11967, USA

UniProt ID

Q14242

SDS-PAGE



 Tel: 1-631-559-9269 1-516-512-3133

 Email: [info@creative-biomart.com](mailto:info@creative-biomart.com)  Fax: 1-631-938-8127

 45-1 Ramsey Road, Shirley, NY 11967, USA