

## Recombinant Cynomolgus SELPLG protein, His-tagged

Cat. No. SELPLG-1622C Lot. No. (See product label)

### SPECIFICATION

<b>Product Overview</b>	Recombinant Cynomolgus SELPLG protein(A0A7N9CVJ8)(Leu34-Cys356), fused with C-terminal His tag, was expressed in HEK293.
<b>Species</b>	Cynomolgus
<b>Source</b>	C-His
<b>ProteinLength</b>	Leu34-Cys356
<b>Tag</b>	C-His
<b>Form</b>	Lyophilized from 0.22µm filtered solution in PBS (pH 7.4). Normally 8% trehalose is added as protectant before lyophilization.
<b>Bio-activity</b>	
<b>Molecular Mass</b>	The protein has a predicted MW of 34.57 kDa. Due to glycosylation, the protein migrates to 72-82 kDa based on Tris-Bis PAGE result.
<b>Endotoxin</b>	Less than 1EU per µg by the LAL method.
<b>Purity</b>	> 95% as determined by Tris-Bis PAGE; > 95% as determined by HPLC.
<b>Storage</b>	Reconstituted protein stable at -80°C for 12 months, 4°C for 1 week. Use a manual defrost freezer and avoid repeated freeze-thaw cycles.

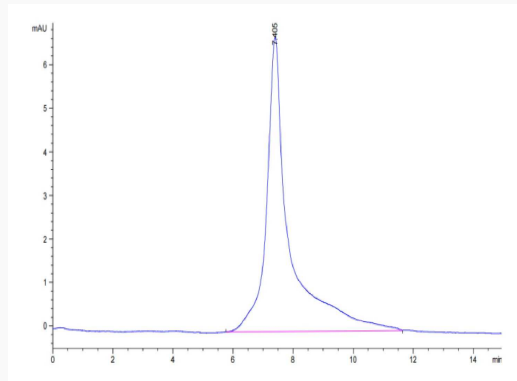
 Tel: 1-631-559-9269 1-516-512-3133

 Email: [info@creative-biomart.com](mailto:info@creative-biomart.com)  Fax: 1-631-938-8127

 45-1 Ramsey Road, Shirley, NY 11967, USA

**Reconstitution**

Centrifuge tubes before opening. Reconstituting to a concentration more than 100 µg/ml is recommended. Dissolve the lyophilized protein in distilled water.

**Tris-Bis PAGE****SEC-HPLC**

Tel: 1-631-559-9269 1-516-512-3133

Email: [info@creative-biomart.com](mailto:info@creative-biomart.com) Fax: 1-631-938-8127

45-1 Ramsey Road, Shirley, NY 11967, USA