

Recombinant Human SELPLG protein, hFc-tagged

Cat. No. SELPLG-458H Lot. No. (See product label)

SPECIFICATION

Product Overview	Recombinant Human SELPLG protein(Q14242)(Leu18-Cys320), fused with hFc tag, was expressed in HEK293.
Species	Human
Source	HEK293
ProteinLength	Leu18-Cys320
Form	Lyophilized from 0.22 µm filtered solution in PBS, pH7.4.
Molecular Mass	The protein has a calculated MW of 57kDa. The reducing (R) heterodimer protein migrates as 100-120 kDa due to glycosylation
Endotoxin	<1EU/mg
Purity	SDS-PAGE>90%SEC>95%
Storage	Store at -20°C.
Reconstitution	sterile H19O

GENE INFORMATION

Gene Name SELPLG selectin P ligand [Homo sapiens]

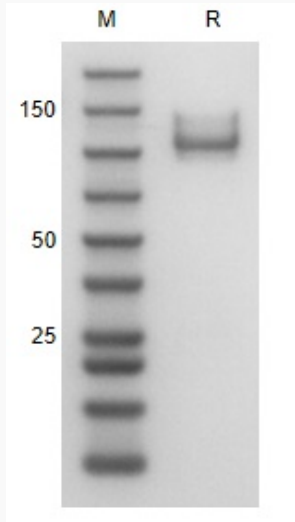
 Tel: 1-631-559-9269 1-516-512-3133

 Email: info@creative-biomart.com  Fax: 1-631-938-8127

 45-1 Ramsey Road, Shirley, NY 11967, USA

Official Symbol	SELPLG
Synonyms	SELPLG; selectin P ligand; P-selectin glycoprotein ligand 1; CD162; PSGL 1; cutaneous lymphocyte-associated associated antigen; CLA; PSGL1; PSGL-1;
Gene ID	6404
mRNA Refseq	NM_001206609
Protein Refseq	NP_001193538
MIM	600738
UniProt ID	Q14242

SDS-PAGE



The SDS-PAGE gel image displays two lanes. Lane M is a molecular weight marker with bands at 150, 50, and 25 kDa. Lane R shows a single prominent band at approximately 150 kDa, corresponding to the SELPLG protein.

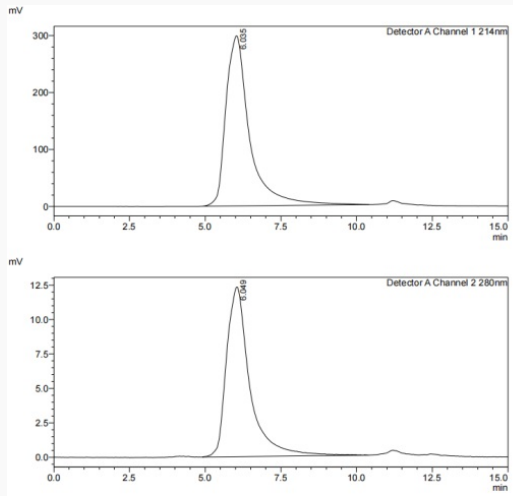
Tel: 1-631-559-9269 1-516-512-3133

Email: info@creative-biomart.com Fax: 1-631-938-8127

45-1 Ramsey Road, Shirley, NY 11967, USA



SDS-HPLC



Tel: 1-631-559-9269 1-516-512-3133

Email: info@creative-biomart.com Fax: 1-631-938-8127

45-1 Ramsey Road, Shirley, NY 11967, USA