

Recombinant Human SELPLG Protein (Leu18-Cys320), C-6xHis-tagged

Cat. No. SELPLG-560H Lot. No. (See product label)

SPECIFICATION

Product Overview

Recombinant Human SELPLG Protein (Leu18-Cys320) with C-6xHis tag was expressed in HEK293.

Species

Human

Source

HEK293

ProteinLength

Leu18-Cys320

Description

This gene encodes a glycoprotein that functions as a high affinity counter-receptor for the cell adhesion molecules P-, E- and L- selectin expressed on myeloid cells and stimulated T lymphocytes. As such, this protein plays a critical role in leukocyte trafficking during inflammation by tethering of leukocytes to activated platelets or endothelia expressing selectins. This protein requires two post-translational modifications, tyrosine sulfation and the addition of the sialyl Lewis x tetrasaccharide (sLex) to its O-linked glycans, for its high-affinity binding activity. Aberrant expression of this gene and polymorphisms in this gene are associated with defects in the innate and adaptive immune response. Alternate splicing results in multiple transcript variants.

Form

Lyophilized

Molecular Mass

31.4 kDa

 Tel: 1-631-559-9269 1-516-512-3133

 Email: info@creative-biomart.com  Fax: 1-631-938-8127

 45-1 Ramsey Road, Shirley, NY 11967, USA

Purity	> 95% as determined by SDS-PAGE and Coomassie blue staining.
Storage	Store at -80 centigrade for 12 months (Avoid repeated freezing and thawing)
Storage Buffer	Lyophilized from sterile PBS, pH 7.4. Normally 5 % - 105 % trehalose is added as protectants before lyophilization.

GENE INFORMATION

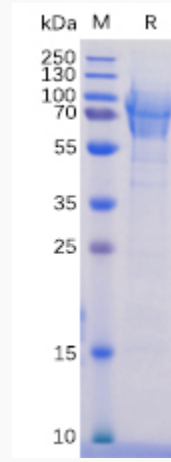
Gene Name	SELPLG selectin P ligand [Homo sapiens (human)]
Official Symbol	SELPLG
Synonyms	SELPLG; selectin P ligand; P-selectin glycoprotein ligand 1; CD162; PSGL 1; cutaneous lymphocyte-associated associated antigen; CLA; PSGL1; PSGL-1;
Gene ID	6404
mRNA Refseq	NM_001206609
Protein Refseq	NP_001193538
MIM	600738
UniProt ID	Q14242

 Tel: 1-631-559-9269 1-516-512-3133

 Email: info@creative-biomart.com  Fax: 1-631-938-8127

 45-1 Ramsey Road, Shirley, NY 11967, USA

SDS-PAGE



 Tel: 1-631-559-9269 1-516-512-3133

 Email: info@creative-biomart.com  Fax: 1-631-938-8127

 45-1 Ramsey Road, Shirley, NY 11967, USA