

Recombinant Human SELPLG protein, His&hFc-tagged

Cat. No. SELPLG-834H Lot. No. (See product label)

SPECIFICATION

Product Overview	Recombinant Human SELPLG protein(Met1-Val295)(AAC50061.1) was expressed in HEK293, fused with the C-terminal polyhistidine-tagged Fc region of human IgG1 at the C-terminus.
Species	Human
Source	HEK293
ProteinLength	1-295 aa
Form	Lyophilized from sterile PBS, pH 7.4.
Molecular Mass	The recombinant human PSGL-1/Fc is a disulfide-linked homodimer after removal of the signal peptide and the prppeptide. The reduced monomer consists of 526 amino acids and has a predicted molecular mass of 57.1 kDa. In SDS-PAGE under reducing conditions, the apparent molecular mass of rh PSGL-1/Fc monomer is approximately 110-120 kDa due to glycosylation.
Endotoxin	< 1.0 EU per µg protein as determined by the LAL method.
Purity	> 95 % as determined by SDS-PAGE
Storage	Store it under sterile conditions at -20°C to -80°C upon receiving. Recommend to aliquot the protein into smaller quantities for optimal storage. Avoid repeated freeze-thaw cycles.

 Tel: 1-631-559-9269 1-516-512-3133

 Email: info@creative-biomart.com  Fax: 1-631-938-8127

 45-1 Ramsey Road, Shirley, NY 11967, USA

Reconstitution It is recommended that sterile water be added to the vial to prepare a stock solution of 0.2 ug/ul. Centrifuge the vial at 4°C before opening to recover the entire contents.

GENE INFORMATION

Gene Name SELPLG selectin P ligand [Homo sapiens]

Official Symbol SELPLG

Synonyms SELPLG; selectin P ligand; P-selectin glycoprotein ligand 1; CD162; PSGL 1; cutaneous lymphocyte-associated associated antigen; CLA; PSGL1; PSGL-1;

Gene ID 6404

mRNA Refseq NM_001206609

Protein Refseq NP_001193538

MIM 600738

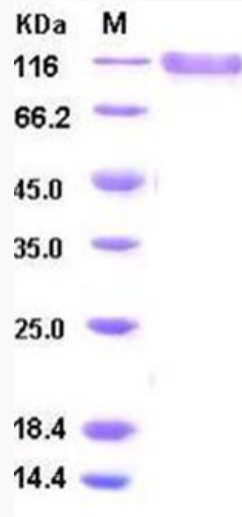
UniProt ID Q14242

 Tel: 1-631-559-9269 1-516-512-3133

 Email: info@creative-biomart.com  Fax: 1-631-938-8127

 45-1 Ramsey Road, Shirley, NY 11967, USA

SDS-PAGE



 Tel: 1-631-559-9269 1-516-512-3133

 Email: info@creative-biomart.com  Fax: 1-631-938-8127

 45-1 Ramsey Road, Shirley, NY 11967, USA