

Recombinant Human SEMA3A Protein (Lys26-His276), N-His tagged

Cat. No. SEMA3A-5527H Lot. No. (See product label)

SPECIFICATION

Product Overview	Recombinant human SEMA3A (Lys26-His276) fused with the N-His tag was expressed in E. coli.
Species	Human
Source	E.coli
ProteinLength	Lys26-His276
Form	Lyophilized powder/frozen liquid
Molecular Mass	31.42 kDa
Purity	> 90 % as determined by SDS-PAGE
Notes	For research use only.
Storage	Use a manual defrost freezer and avoid repeated freeze thaw cycles. Store at 2 to 8 centigrade for one week. Store at -20 to -80 centigrade for twelve months from the date of receipt.
Storage Buffer	0.01M PBS, pH 7.4, 0.02 % NLS
Reconstitution	Reconstitute in sterile water for a stock solution.

 Tel: 1-631-559-9269 1-516-512-3133

 Email: info@creative-biomart.com  Fax: 1-631-938-8127

 45-1 Ramsey Road, Shirley, NY 11967, USA

Shipping They are shipped out with dry ice/blue ice unless customers require otherwise.

GENE INFORMATION

Gene Name SEMA3A semaphorin 3A [Homo sapiens (human)]

Official Symbol SEMA3A

Synonyms SEMA3A; sema domain, immunoglobulin domain (Ig), short basic domain, secreted, (semaphorin) 3A; SEMAD; semaphorin-3A; coll 1; Hsema I; sema III; SEMA1; SemD; collapsin 1; semaphorin D; semaphorin L; semaphorin III; SEMAL; coll-1; Hsema-I; SEMAIII; Hsema-III; MGC133243;

Gene ID 10371

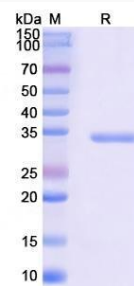
mRNA Refseq NM_006080

Protein Refseq NP_006071

MIM 603961

UniProt ID Q14563

SDS-PAGE



 Tel: 1-631-559-9269 1-516-512-3133

 Email: info@creative-biomart.com  Fax: 1-631-938-8127

 45-1 Ramsey Road, Shirley, NY 11967, USA