

## Recombinant Human SEMA3A protein, His-tagged

Cat. No. SEMA3A-853H Lot. No. (See product label)

### SPECIFICATION

<b>Product Overview</b>	Recombinant Human SEMA3A protein(Q14563)(Asn21-Val771), fused with N-terminal His tag, was expressed in HEK293.
<b>Species</b>	Human
<b>Source</b>	HEK293
<b>ProteinLength</b>	Asn21-Val771
<b>Tag</b>	N-His
<b>Form</b>	Supplied as 0.22µm filtered solution in PBS (pH 7.4).
<b>Bio-activity</b>	Immobilized Anti-SEMA3A Antibody at 5ug/ml (100ul/well) on the plate. Dose response curve for Human SEMA3A, His Tag with the EC50 of 1.30ug/ml determined by ELISA.
<b>Molecular Mass</b>	The protein has a predicted MW of 87.7 kDa same as Tris-Bis PAGE result.
<b>Endotoxin</b>	Less than 1EU per µg by the LAL method.
<b>Purity</b>	> 95% as determined by Tris-Bis PAGE;> 95% as determined by HPLC
<b>Storage</b>	Valid for 12 months from date of receipt when stored at -80°C. Recommend to aliquot the protein into smaller quantities for optimal storage. Please do not repeated freeze-

 Tel: 1-631-559-9269 1-516-512-3133

 Email: [info@creative-biomart.com](mailto:info@creative-biomart.com)  Fax: 1-631-938-8127

 45-1 Ramsey Road, Shirley, NY 11967, USA

thaw cycles.

**Reconstitution**

It is recommended that sterile water be added to the vial to prepare a stock solution of 0.2 ug/ul. Centrifuge the vial at 4°C before opening to recover the entire contents.

## GENE INFORMATION

**Gene Name**

SEMA3A sema domain, immunoglobulin domain (Ig), short basic domain, secreted, (semaphorin) 3A [ Homo sapiens ]

**Official Symbol**

SEMA3A

**Synonyms**

SEMA3A; sema domain, immunoglobulin domain (Ig), short basic domain, secreted, (semaphorin) 3A; SEMAD; semaphorin-3A; coll 1; Hsema I; sema III; SEMA1; SemD; collapsin 1; semaphorin D; semaphorin L; semaphorin III; SEMAL; coll-1; Hsema-I; SEMAIII; Hsema-III; MGC133243;

**Gene ID**

10371

**mRNA Refseq**

NM\_006080

**Protein Refseq**

NP\_006071

**MIM**

603961

**UniProt ID**

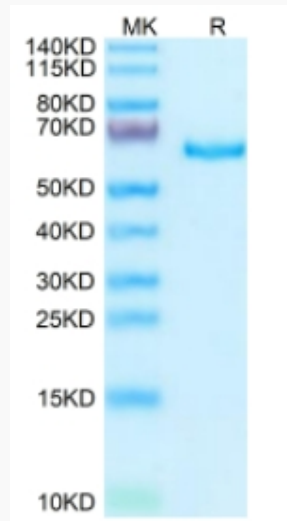
Q14563

 Tel: 1-631-559-9269 1-516-512-3133

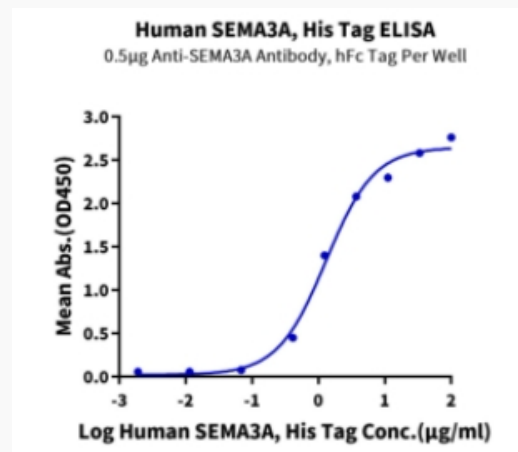
 Email: [info@creative-biomart.com](mailto:info@creative-biomart.com)  Fax: 1-631-938-8127

 45-1 Ramsey Road, Shirley, NY 11967, USA

**Tris-Bis PAGE**



**ELISA Data**



 Tel: 1-631-559-9269 1-516-512-3133

 Email: [info@creative-biomart.com](mailto:info@creative-biomart.com)  Fax: 1-631-938-8127

 45-1 Ramsey Road, Shirley, NY 11967, USA