

## Recombinant Human SEMA3B protein, His-tagged

Cat. No. SEMA3B-1213H Lot. No. (See product label)

### SPECIFICATION

<b>Product Overview</b>	Recombinant Human SEMA3B protein(Q13214)(25-749aa), fused to N-terminal His tag, was expressed in E. coli.
<b>Species</b>	Human
<b>Source</b>	E.coli
<b>ProteinLength</b>	25-749aa
<b>Form</b>	If the delivery form is liquid, the default storage buffer is Tris/PBS-based buffer, 5%-50% glycerol. If the delivery form is lyophilized powder, the buffer before lyophilization is Tris/PBS-based buffer, 6% Trehalose, pH 8.0.
<b>Molecular Mass</b>	85.0 kDa
<b>Purity</b>	Greater than 85% as determined by SDS-PAGE.
<b>Storage</b>	Store at -20°C/-80°C upon receipt, aliquoting is necessary for mutiple use. Avoid repeated freeze-thaw cycles.
<b>Reconstitution</b>	It is recommended that sterile water be added to the vial to prepare a stock solution of 0.2 ug/ul. Centrifuge the vial at 4°C before opening to recover the entire contents.

### GENE INFORMATION

 Tel: 1-631-559-9269 1-516-512-3133

 Email: [info@creative-biomart.com](mailto:info@creative-biomart.com)  Fax: 1-631-938-8127

 45-1 Ramsey Road, Shirley, NY 11967, USA

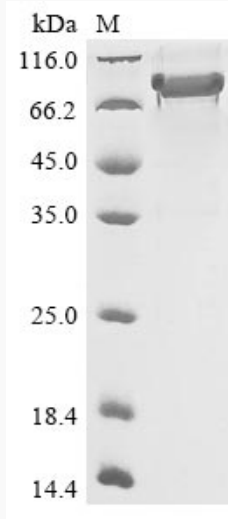
<b>Gene Name</b>	SEMA3B sema domain, immunoglobulin domain (Ig), short basic domain, secreted, (semaphorin) 3B [ Homo sapiens ]
<b>Official Symbol</b>	SEMA3B
<b>Synonyms</b>	SEMA3B; sema domain, immunoglobulin domain (Ig), short basic domain, secreted, (semaphorin) 3B; SEMAA; semaphorin-3B; LUCA 1; SemA; sema5; semaV; sema V; sema A(V); semaphorin A; semaphorin V; semaphorin-V; SEMA5; LUCA-1; FLJ34863;
<b>Gene ID</b>	7869
<b>mRNA Refseq</b>	NM_001005914
<b>Protein Refseq</b>	NP_001005914
<b>MIM</b>	601281
<b>UniProt ID</b>	Q13214

 Tel: 1-631-559-9269 1-516-512-3133

 Email: [info@creative-biomart.com](mailto:info@creative-biomart.com)  Fax: 1-631-938-8127

 45-1 Ramsey Road, Shirley, NY 11967, USA

**SDS-PAGE**



 Tel: 1-631-559-9269 1-516-512-3133

 Email: [info@creative-biomart.com](mailto:info@creative-biomart.com)  Fax: 1-631-938-8127

 45-1 Ramsey Road, Shirley, NY 11967, USA