

Recombinant Human SEMA3C Protein, hlgG-tagged

Cat. No. SEMA3C-05H Lot. No. (See product label)

SPECIFICATION

Product Overview	Recombinant human Semaphorin 3C (21-738aa), fused to hlgG-tag at C-terminus, was expressed in HEK293 cell and purified by using conventional chromatography techniques.
Species	Human
Source	HEK293
ProteinLength	21-738aa
Description	This gene encodes a secreted glycoprotein that belongs to the semaphorin class 3 family of neuronal guidance cues. The encoded protein contains an N-terminal sema domain, integrin and immunoglobulin-like domains, and a C-terminal basic domain. Homodimerization and proteolytic cleavage of the C-terminal propeptide are necessary for the function of the encoded protein. It binds a neuropilin co-receptor before forming a heterotrimeric complex with an associated plexin. An increase in the expression of this gene correlates with an increase in cancer cell invasion and adhesion. Naturally occurring mutations in this gene are associated with Hirschsprung disease.
Form	Liquid
Molecular Mass	107.2 kDa (951aa)
AA Sequence	GSSQPQARVYLTFDELRETKTSEYFSLSHHPLDYRILLMDEDQDRIYVGSKDHILSLN

 Tel: 1-631-559-9269 1-516-512-3133

 Email: info@creative-biomart.com  Fax: 1-631-938-8127

 45-1 Ramsey Road, Shirley, NY 11967, USA

INNISQEALSVFWPASTIKVEECKMAGKDPHTGCGNFVRVIQTFNRTHLYVCGSGAF
 SPVCTYLNRGRSEDQVFMIDSKCESGKGRCSFNPNVNTVSVMINEELFSGMYIDF
 MGTDAAIRSLTKRNAVRTDQHNSKWLSEPMFVDAHVIPDGTDPNDAKVYFFFKEK
 LTDNNRSTKQIHSMIARICPNDTGGLRSLVKNWTTFLKARLVCSVTDEDGPETHFDE
 LEDVFLLETDNPRRTL VYGIFTTSSSVFKGSAVCVYHLSDIQTVFNGPFAHKEGPNHQ
 LISYQGRIPYPRPGTCPGGAFTPNMRTTKEFPDDVVTFIRNHPLMYNSIYPIHKRPLIV
 RIGTDYKYTKIAVDRVNAADGRYHVLFLGTDRGTVQKVVVLPNTNSVSGELILEELEV
 FKNHAPITTMKISSKKQQLYVSSNEGVSQVSLHRCHIYGTACADCCLARDPYCAWD
 GHSCSRFYPTGKRRSAAQDVRHGNPLTQCRGFNLKAYRNAAEIVQYGVKNNTTFLE
 CAPKSPQASIKWLLQKDKDAAKEVKLNERIATSQGLLIRSVQGSQQGLYHCIATENS
 FKQTIKINFKVLDSEMVAVVTDKWSPWTWASSVRALPFHPKDIMGAFSHSEMQMI
 NQYCKDTRQQHQQGDESQKMRGDYGKCLKALINS

Endotoxin < 1 EU/μg of protein (determined by LAL method)

Purity > 90% by SDS-PAGE

Applications SDS-PAGE

Storage Can be stored at +2 to +8 centigrade for 1 week. For long term storage, aliquot and store at -20 to -80 centigrade. Avoid repeated freezing and thawing cycles.

Concentration 1 mg/mL (determined by Absorbance at 280nm)

Storage Buffer Phosphate-Buffered Saline (pH 7.4) containing 10% glycerol

GENE INFORMATION

Gene Name SEMA3C semaphorin 3C [Homo sapiens (human)]

Official Symbol SEMA3C

 Tel: 1-631-559-9269 1-516-512-3133

 Email: info@creative-biomart.com  Fax: 1-631-938-8127

 45-1 Ramsey Road, Shirley, NY 11967, USA

Synonyms SEMA3C; semaphorin 3C; SemE; SEMAE; semaphorin-3C; sema E; sema domain, immunoglobulin domain (Ig), short basic domain, secreted, (semaphorin) 3C; semaphorin E

Gene ID 10512

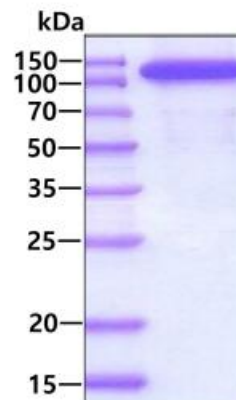
mRNA Refseq NM_006379

Protein Refseq NP_006370.1

MIM 602645

UniProt ID Q99985

SDS-PAGE



3 µg by SDS-PAGE under reducing condition and visualized by coomassie blue stain

 Tel: 1-631-559-9269 1-516-512-3133

 Email: info@creative-biomart.com  Fax: 1-631-938-8127

 45-1 Ramsey Road, Shirley, NY 11967, USA