

Recombinant Human SEMA3C protein, His-tagged

Cat. No. SEMA3C-1906H Lot. No. (See product label)

SPECIFICATION

Product Overview	Recombinant Human SEMA3C aa. (Arg28~Asp150 (Accession # Q99985)) fused with N-terminal His tag was produced in E. coli cells.
Species	Human
Source	E.coli
ProteinLength	Arg28~Asp150
Description	This gene encodes a secreted glycoprotein that belongs to the semaphorin class 3 family of neuronal guidance cues. The encoded protein contains an N-terminal sema domain, integrin and immunoglobulin-like domains, and a C-terminal basic domain. Homodimerization and proteolytic cleavage of the C-terminal propeptide are necessary for the function of the encoded protein. It binds a neuropilin co-receptor before forming a heterotrimeric complex with an associated plexin. An increase in the expression of this gene correlates with an increase in cancer cell invasion and adhesion. Naturally occurring mutations in this gene are associated with Hirschsprung disease.
Form	Freeze-dried powder
Molecular Mass	Predicted Molecular Mass: 15.7kDa
Endotoxin	<1.0EU per 1ug (determined by the LAL method)

 Tel: 1-631-559-9269 1-516-512-3133

 Email: info@creative-biomart.com  Fax: 1-631-938-8127

 45-1 Ramsey Road, Shirley, NY 11967, USA

Purity	>95%
Applications	SDS-PAGE; WB; ELISA; IP.
Stability	The thermal stability is described by the loss rate. The loss rate was determined by accelerated thermal degradation test, that is, incubate the protein at 37°C for 48h, and no obvious degradation and precipitation were observed. The loss rate is less than 5% within the expiration date under appropriate storage condition.
Storage	Avoid repeated freeze/thaw cycles. Store at 2-8°C for one month. Aliquot and store at -80°C for 12 months.
Storage buffer	Supplied as lyophilized form in 10mM PBS, pH7.4, containing 1mM DTT, 5% trehalose, 0.01% sarcosyl and preservative.
Reconstitution	Reconstitute in sterile ddH ₂ O.
Isoelectric Point	6.4

GENE INFORMATION

Gene Name	SEMA3C semaphorin 3C [Homo sapiens (human)]
Official Symbol	SEMA3C
Synonyms	SEMA3C; semaphorin 3C; SemE; SEMAE; semaphorin-3C; sema E; sema domain, immunoglobulin domain (Ig), short basic domain, secreted, (semaphorin) 3C; semaphorin E
Gene ID	10512

 Tel: 1-631-559-9269 1-516-512-3133

 Email: info@creative-biomart.com  Fax: 1-631-938-8127

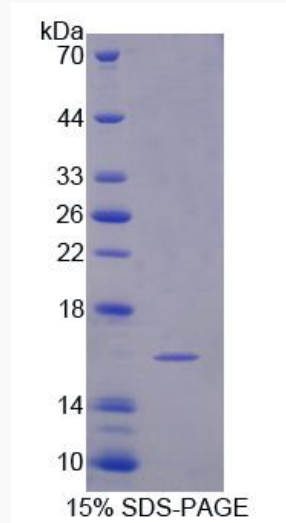
 45-1 Ramsey Road, Shirley, NY 11967, USA

mRNA Refseq [NM_006379.4](#)

Protein Refseq [NP_006370.1](#)

UniProt ID [Q99985](#)

SDS-PAGE



 Tel: 1-631-559-9269 1-516-512-3133

 Email: info@creative-biomart.com  Fax: 1-631-938-8127

 45-1 Ramsey Road, Shirley, NY 11967, USA