

Recombinant Human SEMA3C protein, His-tagged

Cat. No. SEMA3C-5551H Lot. No. (See product label)

SPECIFICATION

Product Overview	Recombinant Human SEMA3C protein(Q99985)(21-738 aa), fused with C-terminal His tag, was expressed in Mammalian cells.
Species	Human
Source	Mammalian cells
ProteinLength	21-738 aa
Form	Supplied as a 0.2 µm filtered solution of 20mM NaH ₂ PO ₄ , 150mM NaCl, 0.1M Arginine, 0.1M Glu, 10% Glycerol, 0.01% Tween20, 5% Trehalose, pH 7.4.
Molecular Mass	82.44 KDa
Endotoxin	< 1 EU/g as determined by LAL test.
Purity	Greater than 95% as determined by reducing SDS-PAGE.
Storage	Store at ≤-70°C, stable for 6 months after receipt. Store at ≤-70°C, stable for 3 months under sterile conditions after opening. Please minimize freeze-thaw cycles.
Reconstitution	It is recommended that sterile water be added to the vial to prepare a stock solution of 0.2 ug/ul. Centrifuge the vial at 4°C before opening to recover the entire contents.

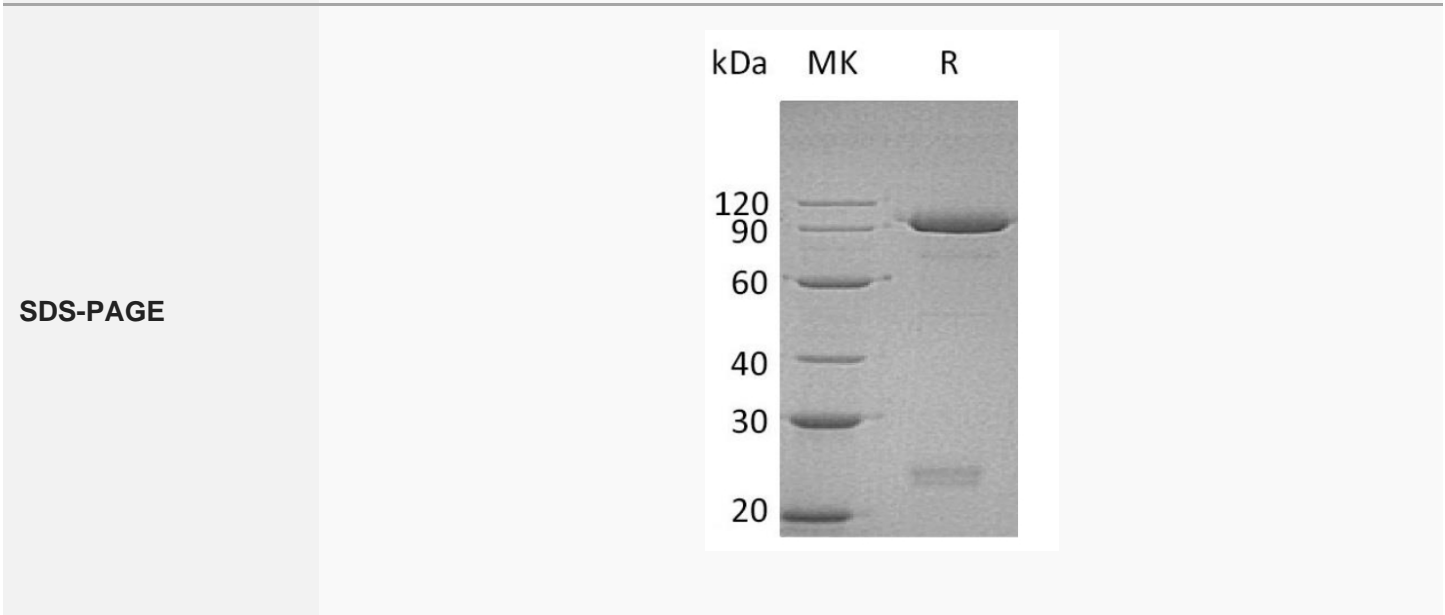
GENE INFORMATION

 Tel: 1-631-559-9269 1-516-512-3133

 Email: info@creative-biomart.com  Fax: 1-631-938-8127

 45-1 Ramsey Road, Shirley, NY 11967, USA

Gene Name	SEMA3C sema domain, immunoglobulin domain (Ig), short basic domain, secreted, (semaphorin) 3C [Homo sapiens]
Official Symbol	SEMA3C
Synonyms	SemE; SEMAE
Gene ID	10512
mRNA Refseq	NM_006379.3
Protein Refseq	NP_006370.1
MIM	602645
UniProt ID	Q99985



Tel: 1-631-559-9269 1-516-512-3133

Email: info@creative-biomart.com Fax: 1-631-938-8127

45-1 Ramsey Road, Shirley, NY 11967, USA