

Recombinant Chicken SEMA3E protein, His-tagged

Cat. No. SEMA3E-1907C Lot. No. (See product label)

SPECIFICATION

Product Overview	Recombinant Chicken SEMA3E aa. (Leu651~Asp740 (Accession # O42237)) fused with N-terminal His tag was produced in E. coli cells.
Species	Chicken
Source	E.coli
ProteinLength	Leu651~Asp740
Form	Freeze-dried powder
Molecular Mass	Predicted Molecular Mass: 12.3kDa
Endotoxin	<1.0EU per 1ug (determined by the LAL method)
Purity	>95%
Applications	SDS-PAGE; WB; ELISA; IP.
Stability	The thermal stability is described by the loss rate. The loss rate was determined by accelerated thermal degradation test, that is, incubate the protein at 37°C for 48h, and no obvious degradation and precipitation were observed. The loss rate is less than 5% within the expiration date under appropriate storage condition.
Storage	Avoid repeated freeze/thaw cycles. Store at 2-8°C for one month. Aliquot and store at

 Tel: 1-631-559-9269 1-516-512-3133

 Email: info@creative-biomart.com  Fax: 1-631-938-8127

 45-1 Ramsey Road, Shirley, NY 11967, USA

-80°C for 12 months.

Storage buffer Supplied as lyophilized form in PBS, pH7.4, containing 5% sucrose, 0.01% sarcosyl.

Reconstitution Reconstitute in sterile PBS, pH7.2-pH7.4.

Isoelectric Point 5.4

GENE INFORMATION

Gene Name SEMA3E semaphorin 3E [Gallus gallus (chicken)]

Official Symbol SEMA3E

Synonyms SEMA3E; semaphorin 3E; semaphorin-3E; COLL-5; collapsin-5; sema domain, immunoglobulin domain (Ig), short basic domain, secreted, (semaphorin) 3E

Gene ID 374089

mRNA Refseq NM_204242.1

Protein Refseq NP_989573.1

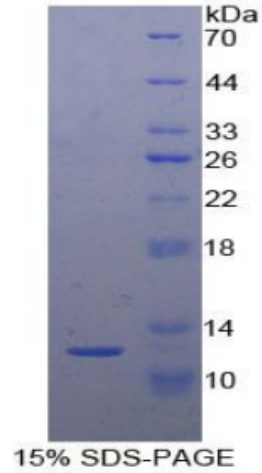
UniProt ID O42237

 Tel: 1-631-559-9269 1-516-512-3133

 Email: info@creative-biomart.com  Fax: 1-631-938-8127

 45-1 Ramsey Road, Shirley, NY 11967, USA

SDS-PAGE



 Tel: 1-631-559-9269 1-516-512-3133

 Email: info@creative-biomart.com  Fax: 1-631-938-8127

 45-1 Ramsey Road, Shirley, NY 11967, USA