

## Recombinant Human SEMA3E protein, His & T7-tagged

Cat. No. SEMA3E-1908H Lot. No. (See product label)

### SPECIFICATION

|                         |   |
|-------------------------|---|
| <b>Product Overview</b> | Recombinant Human SEMA3E aa. (Arg32~Phe516 (Accession # O15041)) fused with N-terminal His & T7 tag was produced in E. coli cells.  |
| <b>Species</b>          | Human   |
| <b>Source</b>           | E.coli  |
| <b>ProteinLength</b>    | Arg32~Phe516  |
| <b>Description</b>      | Semaphorins are a large family of conserved secreted and membrane associated proteins which possess a semaphorin (Sema) domain and a PSI domain (found in plexins, semaphorins and integrins) in the N-terminal extracellular portion. Based on sequence and structural similarities, semaphorins are put into eight classes: invertebrates contain classes 1 and 2, viruses have class V, and vertebrates contain classes 3-7. Semaphorins serve as axon guidance ligands via multimeric receptor complexes, some (if not all) containing plexin proteins. This gene encodes a class 4 semaphorin. This gene encodes a class 3 semaphorin. Multiple transcript variants encoding different isoforms have been found for this gene. |
| <b>Form</b>             | Freeze-dried powder   |
| <b>Molecular Mass</b>   | Predicted Molecular Mass: 59.1kDa   |
| <b>Endotoxin</b>        | <1.0EU per 1ug (determined by the LAL method)   |

 Tel: 1-631-559-9269 1-516-512-3133

 Email: [info@creative-biomart.com](mailto:info@creative-biomart.com)  Fax: 1-631-938-8127

 45-1 Ramsey Road, Shirley, NY 11967, USA

|                          |   |
|--------------------------|---|
| <b>Purity</b>            | >90%  |
| <b>Applications</b>      | SDS-PAGE; WB; ELISA; IP.  |
| <b>Stability</b>         | The thermal stability is described by the loss rate. The loss rate was determined by accelerated thermal degradation test, that is, incubate the protein at 37°C for 48h, and no obvious degradation and precipitation were observed. The loss rate is less than 5% within the expiration date under appropriate storage condition. |
| <b>Storage</b>           | Avoid repeated freeze/thaw cycles. Store at 2-8°C for one month. Aliquot and store at -80°C for 12 months.  |
| <b>Storage buffer</b>    | Supplied as lyophilized form in PBS, pH7.4, containing 5% trehalose, 0.01% sarcosyl.  |
| <b>Reconstitution</b>    | Reconstitute in sterile PBS, pH7.2-pH7.4.   |
| <b>Isoelectric Point</b> | 6.5   |
| <b>GENE INFORMATION</b>  |   |
| <b>Gene Name</b>         | SEMA3E semaphorin 3E [ Homo sapiens (human) ]   |
| <b>Official Symbol</b>   | SEMA3E  |
| <b>Synonyms</b>          | SEMA3E; semaphorin 3E; SEMAH; coll-5; M-SEMAH; M-SemaK; semaphorin-3E; sema domain, immunoglobulin domain (Ig), short basic domain, secreted, (semaphorin) 3E   |
| <b>Gene ID</b>           | 9723  |
| <b>mRNA Refseq</b>       | NM_001178129.1  |

 Tel: 1-631-559-9269 1-516-512-3133

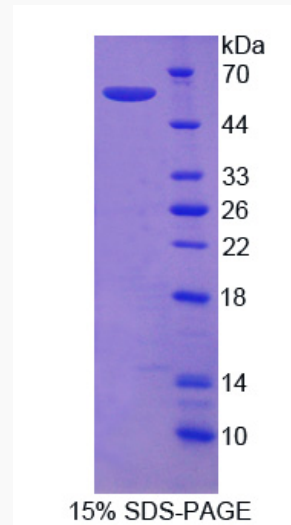
 Email: [info@creative-biomart.com](mailto:info@creative-biomart.com)  Fax: 1-631-938-8127

 45-1 Ramsey Road, Shirley, NY 11967, USA

**Protein Refseq** NP\_001171600.1

**UniProt ID** O15041

**SDS-PAGE**



 Tel: 1-631-559-9269 1-516-512-3133

 Email: [info@creative-biomart.com](mailto:info@creative-biomart.com)  Fax: 1-631-938-8127

 45-1 Ramsey Road, Shirley, NY 11967, USA