

Recombinant Human SEMA4B Protein, Myc/DDK-tagged, C13 and N15-labeled

Cat. No. SEMA4B-3798H **Lot. No.** (See product label)

SPECIFICATION

Product Overview	SEMA4B MS Standard C13 and N15-labeled recombinant protein (NP_064595) with a C-terminal MYC/DDK tag, was expressed in HEK293 cells.
Species	Human
Source	HEK293
Description	SEMA4B (Semaphorin 4B) is a Protein Coding gene. Diseases associated with SEMA4B include Epilepsy, Familial Temporal Lobe, 8 and Kabuki Syndrome 1. Among its related pathways are Neuroscience and NF-KappaB Family Pathway. An important paralog of this gene is SEMA4C.
Molecular Mass	92.6 kDa
AA Sequence	<pre> MLRTAMGLRSWLAAPWGALPPRPPLLLLLLLLLLLLLLQPPPPTWALSPRISLPLGSEER PFLRFEAEHISNYTALLSRDGRTLYVGAREALFALSSNLSFLPGGEYQELLWGADA EKKQQCSFKGKDPQRDCQNYIKILLPLSGSHLFTCGTAAFSPMCTYINMENFTLARD EKGNVLLLEDGKGRCPDPNFKSTALVVDGELYTGTVSSFQGNPAISRSQSLRPTK TESSLNWLQDPAFVASAYIPESLGS LQGDDDKIYFFFSETGQEFEFFENTIVSRIARIC KGDEGGERVLQQRWTSFLKAQLLCSRPDGFPFNVLQDVFTLSPSPQDWRDTLFY GVFTSQWHRGTTEGSAVCVFTMKDVQRVFSGLYKEVNRETQQWYTVTHPVPTPR PGACITNSARERKINSSLQLPDRVLNFKDHFMDGQVRSRMLLLQPQARYQRVAV HRVPGLHHTYDVLFLGTGDGRLHKAVSVGPRVHIIIEELQIFSSGQPVQNLLLDTHRG </pre>

 Tel: 1-631-559-9269 1-516-512-3133

 Email: info@creative-biomart.com  Fax: 1-631-938-8127

 45-1 Ramsey Road, Shirley, NY 11967, USA

LLYAASHSGVVQVPMANCSLYRSCGDCLLARDPYCAWSGSSCKHVSPLYQPQLATR
 PWIQDIEGASAKDLCSASSVSPSFVPTGEKPCEQVQFQPNTVNTLACPLLSNLATR
 LWLRNGAPVNASASCHVLPTGDLLLVTGQQLGEFQCWSLEEGFQQLVASYCPEVV
 EDGVADQTDEGGSVPIISTSRVSAPAGGKASWGADRSYWKEFLVMCTLFVLAVLL
 PVLFLLYRHRNSMKVFLKQGECASVHPKTCPPVLPETRPLNGLGPPSTPLDHRGY
 QSLSDSPPGARVFTSEKRPLSIQDSFVEVSPVCPRPRVRLGSEIRDSVVTRTRPLE
 QKLISEEDLAANDILDYKDDDDKV

Purity > 80% as determined by SDS-PAGE and Coomassie blue staining

Stability Stable for 3 months from receipt of products under proper storage and handling conditions.

Storage Store at -80 centigrade. Avoid repeated freeze-thaw cycles.

Concentration 50 µg/mL as determined by BCA

Storage Buffer 100 mM glycine, 25 mM Tris-HCl, pH 7.3.

GENE INFORMATION

Gene Name [SEMA4B semaphorin 4B \[Homo sapiens \(human\) \]](#)

Official Symbol [SEMA4B](#)

Synonyms

SEMA4B; sema domain, immunoglobulin domain (Ig), transmembrane domain (TM) and short cytoplasmic domain, (semaphorin) 4B; SEMAC; semaphorin-4B; KIAA1745; MGC131831; SemC; sema domain, immunoglobulin domain (Ig), transmembrane domain (TM) and short cytoplasmic domain, 4B;

Gene ID [10509](#)

 Tel: 1-631-559-9269 1-516-512-3133

 Email: info@creative-biomart.com  Fax: 1-631-938-8127

 45-1 Ramsey Road, Shirley, NY 11967, USA

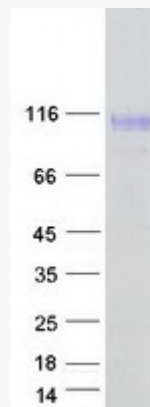
mRNA Refseq [NM_020210](#)

Protein Refseq [NP_064595](#)

MIM [617029](#)

UniProt ID [Q9NPR2](#)

SDS-PAGE



 Tel: 1-631-559-9269 1-516-512-3133

 Email: info@creative-biomart.com  Fax: 1-631-938-8127

 45-1 Ramsey Road, Shirley, NY 11967, USA