

## Recombinant Human SEMA4B Protein (Leu39-Glu712), C-Fc and His tagged

Cat. No. SEMA4B-5549H Lot. No. (See product label)

### SPECIFICATION

|                         |   |
|-------------------------|---|
| <b>Product Overview</b> | Recombinant human SEMA4B (Leu39-Glu712) fused with the C-terminal Fc and His tag was expressed in mammalian cells.  |
| <b>Species</b>          | Human   |
| <b>Source</b>           | Mammalian Cells   |
| <b>ProteinLength</b>    | Leu39-Glu712  |
| <b>Form</b>             | Lyophilized powder/frozen liquid  |
| <b>Molecular Mass</b>   | 99.14 kDa   |
| <b>Purity</b>           | > 90 % as determined by SDS-PAGE  |
| <b>Notes</b>            | For research use only.  |
| <b>Storage</b>          | Use a manual defrost freezer and avoid repeated freeze thaw cycles. Store at 2 to 8 centigrade for one week. Store at -20 to -80 centigrade for twelve months from the date of receipt. |
| <b>Storage Buffer</b>   | Supplied as solution form in PBS or lyophilized from PBS.   |
| <b>Reconstitution</b>   | Reconstitute in sterile water for a stock solution.   |

 Tel: 1-631-559-9269 1-516-512-3133

 Email: [info@creative-biomart.com](mailto:info@creative-biomart.com)  Fax: 1-631-938-8127

 45-1 Ramsey Road, Shirley, NY 11967, USA

**Shipping** They are shipped out with dry ice/blue ice unless customers require otherwise.

## GENE INFORMATION

**Gene Name** SEMA4B semaphorin 4B [ Homo sapiens (human) ]

**Official Symbol** SEMA4B

**Synonyms** SEMA4B; sema domain, immunoglobulin domain (Ig), transmembrane domain (TM) and short cytoplasmic domain, (semaphorin) 4B; SEMAC; semaphorin-4B; KIAA1745; MGC131831; SemC; sema domain, immunoglobulin domain (Ig), transmembrane domain (TM) and short cytoplasmic domain, 4B;

**Gene ID** 10509

**mRNA Refseq** NM\_020210

**Protein Refseq** NP\_064595

**MIM** 617029

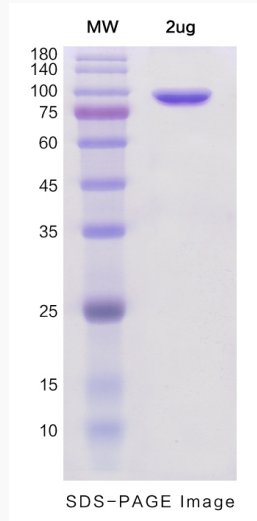
**UniProt ID** Q9NPR2

 Tel: 1-631-559-9269 1-516-512-3133

 Email: [info@creative-biomart.com](mailto:info@creative-biomart.com)  Fax: 1-631-938-8127

 45-1 Ramsey Road, Shirley, NY 11967, USA

**SDS-PAGE**



 Tel: 1-631-559-9269 1-516-512-3133

 Email: [info@creative-biomart.com](mailto:info@creative-biomart.com)  Fax: 1-631-938-8127

 45-1 Ramsey Road, Shirley, NY 11967, USA