

Recombinant Human SEMA4F Protein, Myc/DDK-tagged, C13 and N15-labeled

Cat. No. SEMA4F-3325H Lot. No. (See product label)

SPECIFICATION

Product Overview

SEMA4F MS Standard C13 and N15-labeled recombinant protein (NP_004254) with a C-terminal MYC/DDK tag, was expressed in HEK293 cells.

Species

Human

Source

HEK293

Description

This gene encodes a transmembrane class IV semaphorin family protein, which plays a role in neural development. This gene may be involved in neurogenesis in prostate cancer, the development of neurofibromas, and breast cancer tumorigenesis. Alternative splicing results in multiple transcript variants.

Molecular Mass

83.5 kDa

AA Sequence

MPASAARPRPGPGQPTASPFLLLLLAVLSGPVSGRVPRSVPRRTSLPISEADSCLTRF
 AVPHTYNYSVLLVDPASHTLYVGARDTIFALSLPFSGERPRRIDWMVPEAHRQNCRK
 KGKKEDECHNFVQILAIANASHLLTCGTFAFDPKCGVIDVSRFQQVERLESGRGKCP
 FEPAQRSAAVMAGGVLYAATVKNYLGTETPIITRAVGRAEDWIRTDTLPSWLNAPAFV
 AVALSPAEWGDEDGDDEIYFFFTETSRAFDSYERIKVPRVARVCAGDLGGRKTLQ
 QRWTTFLKADLLCPGPEHGRASSVLQDVAVLRPELGAGTPIFYGIFSSQWEGATISA
 VCAFRPQDIRTVLNGPFRELKHDCNRGLPVVDNDVPQPRPGECITNNMKLRHFGSS
 LSLPDRVLTFFIRDHPLMDRPFVPADGHPLLVTDTAYLRVVAHRVTSLSGKEYDVLYL
 GTEDGHLHRAVRIGAQLSVLEDLALFPEPQPVENMKLYHSWLLVGSRTEVTQVNTT

 Tel: 1-631-559-9269 1-516-512-3133

 Email: info@creative-biomart.com  Fax: 1-631-938-8127

 45-1 Ramsey Road, Shirley, NY 11967, USA

NCGRLQSCSECILAQDPVCAWSFRLDECVAHAGEHRGLVQDIESADVSSLCPKEPG
 ERPVVFVVPVATAAHVVLPCSPSSAWASCVWHQPSGVLTALTPRRDGLVVTPGA
 MGAYACECQEGGAHVVAAYSLVWGSQRDAPSRAHTVGAGLAGFFLGILAASLTI
 LIGRRQQRRRQRELLARDKVGLDLGAPPSGTTSSYSQDPPSPSPEDERLPLALAKRG
 SGFGGFSPFFLLDPCPSPAHIRLTGAPLATCDETSITRTRPLEQKLISEEDLAANDILD
 YKDDDDKV

Purity > 80% as determined by SDS-PAGE and Coomassie blue staining

Stability Stable for 3 months from receipt of products under proper storage and handling conditions.

Storage Store at -80 centigrade. Avoid repeated freeze-thaw cycles.

Concentration 50 µg/mL as determined by BCA

Storage Buffer 100 mM glycine, 25 mM Tris-HCl, pH 7.3.

GENE INFORMATION

Gene Name [SEMA4F ssemaphorin 4F \[Homo sapiens \(human\) \]](#)

Official Symbol [SEMA4F](#)

Synonyms SEMA4F; sema domain, immunoglobulin domain (Ig), transmembrane domain (TM) and short cytoplasmic domain, (semaphorin) 4F; SEMAM; semaphorin-4F; m Sema M; SEMAW; sema M; sema W; semaphorin M; semaphorin-M; semaphorin-W; sema domain, immunoglobulin domain (Ig), transmembrane domain (TM) and short cytoplasmic domain, 4F; M-SEMA; PRO2353; m-Sema-M;

Gene ID [10505](#)

 Tel: 1-631-559-9269 1-516-512-3133

 Email: info@creative-biomart.com  Fax: 1-631-938-8127

 45-1 Ramsey Road, Shirley, NY 11967, USA

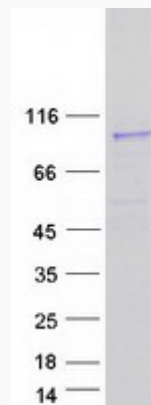
mRNA Refseq [NM_004263](#)

Protein Refseq [NP_004254](#)

MIM [603706](#)

UniProt ID [O95754](#)

SDS-PAGE



 Tel: 1-631-559-9269 1-516-512-3133

 Email: info@creative-biomart.com  Fax: 1-631-938-8127

 45-1 Ramsey Road, Shirley, NY 11967, USA