

Recombinant Human SEMA4G Protein (Val18-Leu680), C-His tagged

Cat. No. SEMA4G-6095H Lot. No. (See product label)

SPECIFICATION

Product Overview	Recombinant human SEMA4G (Val18-Leu680) fused with the C-terminal His tag was expressed in mammalian cells.
Species	Human
Source	Mammalian Cells
ProteinLength	Val18-Leu680
Description	Semaphorins are a large family of conserved secreted and membrane associated proteins which possess a semaphorin (Sema) domain and a PSI domain (found in plexins, semaphorins and integrins) in the N-terminal extracellular portion. Based on sequence and structural similarities, semaphorins are put into eight classes: invertebrates contain classes 1 and 2, viruses have class V, and vertebrates contain classes 3-7. Semaphorins serve as axon guidance ligands via multimeric receptor complexes, some (if not all) containing plexin proteins. Multiple transcript variants encoding different isoforms have been found for this gene.
Form	Lyophilized powder/frozen liquid
Molecular Mass	72.93 kDa
Purity	> 90 % as determined by SDS-PAGE

 Tel: 1-631-559-9269 1-516-512-3133

 Email: info@creative-biomart.com  Fax: 1-631-938-8127

 45-1 Ramsey Road, Shirley, NY 11967, USA

Notes	For research use only.
Storage	Use a manual defrost freezer and avoid repeated freeze thaw cycles. Store at 2 to 8 centigrade for one week. Store at -20 to -80 centigrade for twelve months from the date of receipt.
Storage Buffer	Supplied as solution form in PBS or lyophilized from PBS.
Reconstitution	Reconstitute in sterile water for a stock solution.
Shipping	They are shipped out with dry ice/blue ice unless customers require otherwise.

GENE INFORMATION

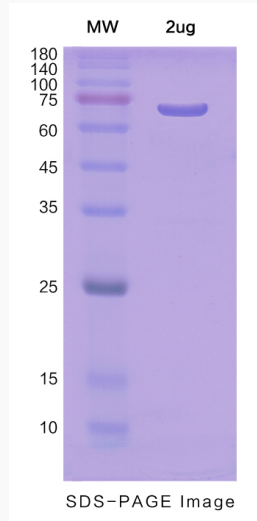
Gene Name	SEMA4G semaphorin 4G [Homo sapiens (human)]
Official Symbol	SEMA4G
Synonyms	semaphorin-4G; sema domain, immunoglobulin domain (Ig), transmembrane domain (TM) and short cytoplasmic domain, (semaphorin) 4G; SEMA4G; semaphorin 4G;
Gene ID	57715
mRNA Refseq	NM_017893
Protein Refseq	NP_060363
MIM	618991
UniProt ID	Q9NTN9

 Tel: 1-631-559-9269 1-516-512-3133

 Email: info@creative-biomart.com  Fax: 1-631-938-8127

 45-1 Ramsey Road, Shirley, NY 11967, USA

SDS-PAGE



 Tel: 1-631-559-9269 1-516-512-3133

 Email: info@creative-biomart.com  Fax: 1-631-938-8127

 45-1 Ramsey Road, Shirley, NY 11967, USA