

Recombinant Full Length Human SEMA5A Protein, C-Flag-tagged

Cat. No. SEMA5A-1015HFL Lot. No. (See product label)

SPECIFICATION

Product Overview	Recombinant Full Length Human SEMA5A Protein, fused to Flag-tag at C-terminus, was expressed in Mammalian cells.
Species	Human
Source	Mammalian Cells
Description	This gene belongs to the semaphorin gene family that encodes membrane proteins containing a semaphorin domain and several thrombospondin type-1 repeats. Members of this family are involved in axonal guidance during neural development. This gene has been implicated as an autism susceptibility gene.
Form	25 mM Tris HCl, pH 7.3, 100 mM glycine, 10% glycerol.
Molecular Mass	118.1 kDa
AA Sequence	MKGTCVIAWLFSSLGLWRLAHPEAQGTTQCQRTEHPVISYKEIGPWLREFRAKNAV DFSQLTDFDPGQKEL VVGARNYLFRLQLEDLSLIQAVEWECDEATKKACYSKGSKE ECQNYIRVLLVGGDRLFTCGTNAFTPVC TNRSLSNLTEIHDQISGMARCPYSPQHN STALLTAGGELYAATAMDFPGRDPAIYRSLGILPPLRTAQYN SKWLNPNFVSSYDI GNFTYFFFRENAVEHDCGKTVFSRAARVCKNDIGGRFLEDTWTTFMKARLNCSR PGEVPFYNELQSTFFLPELDLIYGIFTTNVNSIAASAVCVFNLSAIAQAFSGPFKYQE NSRSAWLPYPN PNPHFQCGTVDQGLYVNLTERNLQDAQKFILMHEVVQPVTTPVS FMEDNSRFSHVAVDVVQGREALVHII YLATDYGTIKKVRVPLNQTSSSCLEEEIELFP

Tel: 1-631-559-9269 1-516-512-3133

Email: info@creative-biomart.com Fax: 1-631-938-8127

45-1 Ramsey Road, Shirley, NY 11967, USA

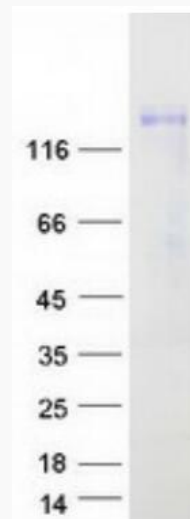
ERRREPIRSLQILHSQSVLFVGLREHVVKIPLKRCQFY RTRSTCIGAQDPYCGWDVV
 MKKCTSLEESLSMTQWEQSIACPTRNLTVDGHFGVWSPWTPCTHTDGS AV GSC
 LCRTRSCDSPAPQCGGWQCEGPGMEIANCSRNGGWTPWTSWSPCSTTCGIGFQV
 RQRSCSNPTPRHG GRVCVGQNREERYCNEHLLCPPHMFWTGWGPWERCTAQC
 GGGIQARRRICENGPDCAGCNVEYQSCNTNP CPELKKTPWTPWTPVNISDNGGH
 YEQRFYRFTCKARLADPNLLEVGRQRIEMRYCSDGTSGCSTDGLSG DFLRAGRYS
 AHTVNGAWSAWTSWSQCSRDCSRGIRNRKRVCCNNPEPKYGGMPCLGPSLEYQEC
 NILPCPV DGVWSCWSPWTKSATCGGGHYMRTRSCSNPAPAYGGDICLGLHTEE
 ALCNTQPCPESWSEWSDWSECEA SGVQVRARQCILLFPMGSQC SGNTTESRPCV
 FDSNFIPEVSVARSSSVVEEKRCGEFNMFMIAVGLSSSI LGCLLTLVYTYCQRYQQ
 QSHDATVIHPVSPAPLNTSITNHINKLDKYDSVEAIKAFNKNLILEERNKY
 FNPHLTGKTYSNAYFTDLNNYDEYTRTRPLEQKLISEEDLAANDILDYKDDDDKV

Purity	> 80% as determined by SDS-PAGE and Coomassie blue staining.
Stability	Stable for 12 months from the date of receipt of the product under proper storage and handling conditions. Avoid repeated freeze-thaw cycles.
Storage	Store at -80 centigrade.
Concentration	>50 ug/mL as determined by microplate BCA method.
Preparation	Recombinant protein was captured through anti-DDK affinity column followed by conventional chromatography steps.
Protein Families	Transmembrane
Protein Pathways	Axon guidance
Full Length	Full L.

 Tel: 1-631-559-9269 1-516-512-3133

 Email: info@creative-biomart.com  Fax: 1-631-938-8127

 45-1 Ramsey Road, Shirley, NY 11967, USA

GENE INFORMATION**Gene Name** SEMA5A semaphorin 5A [Homo sapiens (human)]**Official Symbol** SEMA5A**Synonyms** semF; SEMAF**Gene ID** 9037**mRNA Refseq** NM_003966.3**Protein Refseq** NP_003957.2**MIM** 609297**UniProt ID** Q13591 Tel: 1-631-559-9269 1-516-512-3133 Email: info@creative-biomart.com  Fax: 1-631-938-8127 45-1 Ramsey Road, Shirley, NY 11967, USA



Coomassie blue staining of purified SEMA5A protein.

 Tel: 1-631-559-9269 1-516-512-3133

 Email: info@creative-biomart.com  Fax: 1-631-938-8127

 45-1 Ramsey Road, Shirley, NY 11967, USA