

## Recombinant Human SEMA6A protein, His-tagged

**Cat. No.** SEMA6A-3885H    **Lot. No.** (See product label)

### SPECIFICATION

<b>Product Overview</b>	Recombinant Human SEMA6A protein(NP_065847.1) extracellular domain (Met 1-Thr 649) was expressed in HEK293, with a polyhistidine tag at the C-terminus.
<b>Species</b>	Human
<b>Source</b>	HEK293
<b>ProteinLength</b>	1-649 aa
<b>Form</b>	Lyophilized from sterile PBS, pH 7.4.
<b>Molecular Mass</b>	The recombinant human SEMA6A consists of 642 amino acids and predicts a molecular mass of 72.2 kDa. In SDS-PAGE under reducing conditions, the apparent molecular mass of rh SEMA6A is approximately 85-95 kDa due to glycosylation.
<b>Endotoxin</b>	< 1.0 EU per µg of the protein as determined by the LAL method.
<b>Purity</b>	> 90 % as determined by SDS-PAGE
<b>Storage</b>	Store it under sterile conditions at -20°C to -80°C upon receiving. Recommend to aliquot the protein into smaller quantities for optimal storage. Avoid repeated freeze-thaw cycles.
<b>Reconstitution</b>	It is recommended that sterile water be added to the vial to prepare a stock solution of 0.2 ug/ul. Centrifuge the vial at 4°C before opening to recover the entire contents.

 Tel: 1-631-559-9269    1-516-512-3133

 Email: [info@creative-biomart.com](mailto:info@creative-biomart.com)     Fax: 1-631-938-8127

 45-1 Ramsey Road, Shirley, NY 11967, USA

<b>protein Refseq-Weblink</b>	<a href="http://www.ncbi.nlm.nih.gov/protein/NP_065847.1">http://www.ncbi.nlm.nih.gov/protein/NP_065847.1</a>
-------------------------------	---

<b>Unit ID</b>	Q9H2E6
----------------	--------

<b>Unit ID-Weblink</b>	<a href="https://www.uniprot.org/uniprotkb/Q9H2E6">https://www.uniprot.org/uniprotkb/Q9H2E6</a>
------------------------	---

## GENE INFORMATION

<b>Gene Name</b>	SEMA6A sema domain, transmembrane domain (TM), and cytoplasmic domain, (semaphorin) 6A [ Homo sapiens ]
------------------	---

<b>Official Symbol</b>	SEMA6A
------------------------	--------

<b>Synonyms</b>	SEMA6A; sema domain, transmembrane domain (TM), and cytoplasmic domain, (semaphorin) 6A; SEMAQ; semaphorin-6A; HT018; KIAA1368; SEMA; sema VIa; SEMA6A1; SEMA6A-1; semaphorin VIA; semaphorin 6A-1; semaphorin-6A-1; VIA;
-----------------	---

<b>Gene ID</b>	57556
----------------	-------

<b>mRNA Refseq</b>	NM_020796
--------------------	-----------

<b>protein Refseq</b>	NP_065847
-----------------------	-----------

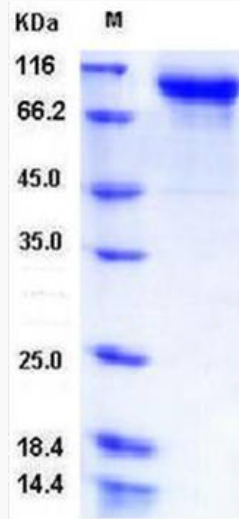
<b>MIM</b>	605885
------------	--------

 Tel: 1-631-559-9269 1-516-512-3133

 Email: [info@creative-biomart.com](mailto:info@creative-biomart.com)  Fax: 1-631-938-8127

 45-1 Ramsey Road, Shirley, NY 11967, USA

SDS-PAGE



 Tel: 1-631-559-9269 1-516-512-3133

 Email: [info@creative-biomart.com](mailto:info@creative-biomart.com)  Fax: 1-631-938-8127

 45-1 Ramsey Road, Shirley, NY 11967, USA