

# Recombinant Human semaphorin 6C Protein, His tagged

Cat. No. SEMA6C-776H Lot. No. (See product label)

## SPECIFICATION

<b>Product Overview</b>	Recombinant Human SEMA6C Protein (25-601aa) with His tag was expressed in HEK293.
<b>Species</b>	Human
<b>Source</b>	HEK293
<b>ProteinLength</b>	25-601aa
<b>Description</b>	This gene encodes a member of the semaphorin family. Semaphorins represent important molecular signals controlling multiple aspects of the cellular response that follows CNS injury, and thus may play an important role in neural regeneration.
<b>Tag</b>	C-His
<b>Molecular Mass</b>	63 kDa
<b>AA Sequence</b>	<p>AFPQDPLPLLISDLQGTSPLSWFRGLEDDAVAAELGLDFQRFLTLNRTLLVAARDHV            FSFDLQAEEEGEGGLVFNKYLTWRSQDVENCAVRGKLTDECYNIRVLPWDSQTL            ACGTNSFSPVCRSYGITSLQQEGEELSGQARCPFDATQSNVAIFAEGSLYSATAADF            QASDAVVYRSLGPQPPLRSKYDSKWLREPHFVQALEHGDHVYFFFREVSVEDAR            LGRVQFSRVARVCKRDMGGSPRALDRHWTSFLKLRLNCSVPGDSTFYFDVLQALT            GPVNLHGRSALFGVFTTQNSIPGSAVCAFYLDEIERGFEGKFKEQRSLDGAWTPV            SEDRVSPRPGSCAGVGGAAALFSSSRDLPPDDVLTFIKAHPLLDPAVPPVTHQPLLT            TSRALLTQVAVDGMAGPHSNITVMFLGSNDGTVLKVLTPGGRSGGPEPILLEEIDAY</p>

 Tel: 1-631-559-9269 1-516-512-3133

 Email: [info@creative-biomart.com](mailto:info@creative-biomart.com)  Fax: 1-631-938-8127

 45-1 Ramsey Road, Shirley, NY 11967, USA

SPARCSGKRTAQTARRIIGLELDTEGHRLFVAFSGCIVYLPLSRCARHGACQRSCLA  
 SQDPYCGWHSSRGCVDIRGSGGTDVDQAGNQESMEHGDCQDGATGSQSGPGDS  
 AYGVRRDLPPASASRSVHHHHHHHHH

**Endotoxin** < 1 EU/μg by LAL

**Purity** > 95% by SDS-PAGE

**Storage** Store it under sterile conditions at -20 to -80 centigrade. It is recommended that the protein be aliquoted for optimal storage. Avoid repeated freeze-thaw cycles.

**Storage Buffer** Sterile PBS, pH7.4

**Concentration** 1 mg/mL by BCA

## GENE INFORMATION

**Gene Name** SEMA6C semaphorin 6C [ Homo sapiens (human) ]

**Official Symbol** SEMA6C

**Synonyms** SEMA6C; sema domain, transmembrane domain (TM), and cytoplasmic domain, (semaphorin) 6C; semaphorin-6C; KIAA1869; m Sema Y2; sema Y; semaphorin-Y; SEMAY; m-SemaY; m-SemaY2

**Gene ID** 10500

**mRNA Refseq** NM\_001178061

**Protein Refseq** NP\_001171532

 Tel: 1-631-559-9269 1-516-512-3133

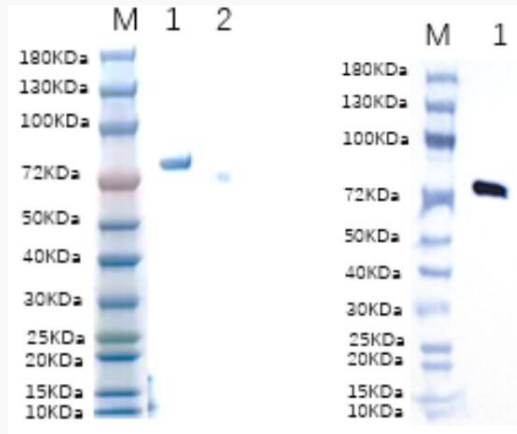
 Email: [info@creative-biomart.com](mailto:info@creative-biomart.com)  Fax: 1-631-938-8127

 45-1 Ramsey Road, Shirley, NY 11967, USA

MIM 609294

UniProt ID Q9H3T2

Reducing 4%-20%  
SDS-PAGE (CBB  
stained) and WB  
(Anti-His Mouse  
Monoclonal  
antibody) analysis  
profiles of purified  
SEMA6C.



1. SEMA6C  
2. BSA

 Tel: 1-631-559-9269 1-516-512-3133

 Email: [info@creative-biomart.com](mailto:info@creative-biomart.com)  Fax: 1-631-938-8127

 45-1 Ramsey Road, Shirley, NY 11967, USA