

# Recombinant Full Length Human SEMA7A Protein, C-Flag-tagged

Cat. No. SEMA7A-110HFL Lot. No. (See product label)

## SPECIFICATION

<b>Product Overview</b>	Recombinant Full Length Human SEMA7A Protein, fused to Flag-tag at C-terminus, was expressed in Mammalian cells.
<b>Species</b>	Human
<b>Source</b>	Mammalian Cells
<b>Description</b>	This gene encodes a member of the semaphorin family of proteins. The encoded preproprotein is proteolytically processed to generate the mature glycosylphosphatidylinositol (GPI)-anchored membrane glycoprotein. The encoded protein is found on activated lymphocytes and erythrocytes and may be involved in immunomodulatory and neuronal processes. The encoded protein carries the John Milton Hagen (JMh) blood group antigens. Mutations in this gene may be associated with reduced bone mineral density (BMD). Alternative splicing results in multiple transcript variants, at least one of which encodes an isoform that is proteolytically processed.
<b>Form</b>	25 mM Tris HCl, pH 7.3, 100 mM glycine, 10% glycerol.
<b>Molecular Mass</b>	70.3 kDa
<b>AA Sequence</b>	MTPPPPGRAAPSAPRARVPGPPARLGLPLRLRLLLLLLWAAAASAQGHLSRSGPRIFAV WKGHVGGQDRVDFG QTEPHTVLFHEPGSSSVWVGGRGKVYLFDFPEGKNASVRTV NIGSTKGSCLDKRDCENYITLLERRSEGL LACGTNARHPSWCNVLVNGTVVPLGEMR

 Tel: 1-631-559-9269 1-516-512-3133

 Email: [info@creative-biomart.com](mailto:info@creative-biomart.com)  Fax: 1-631-938-8127

 45-1 Ramsey Road, Shirley, NY 11967, USA

GYAPFSPDENSLVLFEGDEVYSTIRKQEYNGKIPRFRIRGES ELYTSDTVMQNPQF  
 IKATIVHQDQAYDDKIYYFFREDNPDKNPEAPLNVSVAQLCRGDQGGESSLSVSK  
 WNTFLKAMLVCSDAATNKNFNRLQDVFLLPDPSPGQWRDTRVYGVFNSPWNYSAVC  
 VYSLGDIDKVFRTSS LKGYHSSLPNPRPGKCLPDQQPIPTETFQVADRHPVEVAQRV  
 EPMGPLKTPLFHSKYHYQKVAVHRMQASH GETFHVLYLTDRGTIHKVVEPGEQE  
 HSFAFNIMEIQPFRRAAAIQTMSLDAERRKLYVSSQWEVSQVPL DLCEVYGGGCHG  
 CLMSRDPYCGWDQGRCSISYSSERSVLQSINPAEPHKECPNPKPKAPLQKVSLAP  
 NS RYYLSCPMESRHATYSWRHKENVEQSCEPGHQSPNCILFIENLTAQQYGHYFC  
 EAQEGSYFREAQHWQLL  
 PEDGIMAEHLLGHACALAAASLWLGVLPTLTLGLLVHTRTRPLEQKLISEEDLAANDILD  
 YKDDDDKV

**Purity** > 80% as determined by SDS-PAGE and Coomassie blue staining.

**Stability** Stable for 12 months from the date of receipt of the product under proper storage and handling conditions. Avoid repeated freeze-thaw cycles.

**Storage** Store at -80 centigrade.

**Concentration** >50 ug/mL as determined by microplate BCA method.

**Preparation** Recombinant protein was captured through anti-DDK affinity column followed by conventional chromatography steps.

**Protein Pathways** Axon guidance

**Full Length** Full L.

## GENE INFORMATION

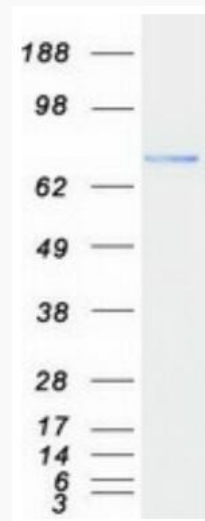
**Gene Name** [SEMA7A semaphorin 7A \(John Milton Hagen blood group\) \[ Homo sapiens \(human\) \]](#)

 Tel: 1-631-559-9269 1-516-512-3133

 Email: [info@creative-biomart.com](mailto:info@creative-biomart.com)  Fax: 1-631-938-8127

 45-1 Ramsey Road, Shirley, NY 11967, USA

<b>Official Symbol</b>	SEMA7A
<b>Synonyms</b>	JMH; CD108; SEMAL; CDw108; PFIC11; SEMAK1; H-Sema-L; H-SEMA-K1
<b>Gene ID</b>	8482
<b>mRNA Refseq</b>	NM_003612.5
<b>Protein Refseq</b>	NP_003603.1
<b>MIM</b>	607961
<b>UniProt ID</b>	O75326



Coomassie blue staining of purified SEMA7A protein.

 Tel: 1-631-559-9269 1-516-512-3133

 Email: [info@creative-biomart.com](mailto:info@creative-biomart.com)  Fax: 1-631-938-8127

 45-1 Ramsey Road, Shirley, NY 11967, USA