

Recombinant Human SEMA7A Protein (45-648 aa), His-tagged

Cat. No. SEMA7A-1957H Lot. No. (See product label)

SPECIFICATION

Product Overview	Recombinant Human SEMA7A Protein (45-648 aa) is produced by Yeast expression system. This protein is fused with a 6xHis tag at the N-terminal. Research Area: Cardiovascular. Protein Description: Full Length of Mature Protein.
Species	Human
Source	Yeast
ProteinLength	45-648 aa
Description	Plays an important role in integrin-mediated signaling and functions both in regulating cell migration and immune responses. Promotes formation of focal adhesion complexes, activation of the protein kinase PTK2/FAK1 and subsequent phosphorylation of MAPK1 and MAPK3. Promotes production of proinflammatory cytokines by monocytes and macrophages. Plays an important role in modulating inflammation and T-cell-mediated immune responses. Promotes axon growth in the embryonic olfactory bulb. Promotes attachment, spreading and dendrite outgrowth in melanocytes.
Form	Tris-based buffer,50% glycerol
Molecular Mass	70.4 kDa
AA Sequence	QGHLRSGPRIFAVWKGHVGGQDRVDFGQTEPHTVLFHEPGSSSVWVGGRGKVYLF DFPEGKNASVRTVNIGSTKGSCLDKRDCENYITLLERRSEGLLACGTNARHPSCWN

 Tel: 1-631-559-9269 1-516-512-3133

 Email: info@creative-biomart.com  Fax: 1-631-938-8127

 45-1 Ramsey Road, Shirley, NY 11967, USA

LVNGTVVPLGEMRGYAPFSPDENSLVLFEGDEVYSTIRKQEYNGKIPRFRIRGESE
 LYTSDTVMQNPQFIKATIVHQDQAYDDKIYYFFREDNPDKNPEAPLNVSVAQLCRG
 DQGGESSLSVSKWNTFLKAMLVCSAATNKNFNRLQDVLLPDPSGQWRDTRVYG
 VFSNPWNYSAVCVYSLGDIDKVFRTSSLKGYHSSLPNPRPGKCLPDQQPIPTETFQV
 ADRHPEVAQRVEPMGPLKTPLFHSHYHYQKVAVHRMQASHGETFHVLYLTDRGTI
 HKVVEPGEQEHSFAFNIMEIQPFRRAAAIQTMSLDAERRKLYVSSQWEVSQVPLDLC
 EVYGGGCHGCLMSRDPYCGWDQGRCSISYSSERSVLQSINPAEPHKECPNPKPDK
 APLQKVSLAPNSRYYLSCPMESRHATYSWRHKENVEQSCEPGHQSPNCILFIENLT
 AQQYGHYFCEAQEGSYFREAQHWQLLPEDGIMAEHLLGHACALA

Purity > 90% as determined by SDS-PAGE.

Notes Repeated freezing and thawing is not recommended. Store working aliquots at 4 centigrade for up to one week.

Storage The shelf life is related to many factors, storage state, buffer ingredients, storage temperature and the stability of the protein itself. Generally, the shelf life of liquid form is 6 months at -20 centigrade/-80 centigrade. The shelf life of lyophilized form is 12 months at -20 centigrade/-80 centigrade.

Concentration A hardcopy of COA with reconstitution instruction is sent along with the products.

GENE INFORMATION

Gene Name SEMA7A semaphorin 7A, GPI membrane anchor (John Milton Hagen blood group) [Homo sapiens]

Official Symbol SEMA7A

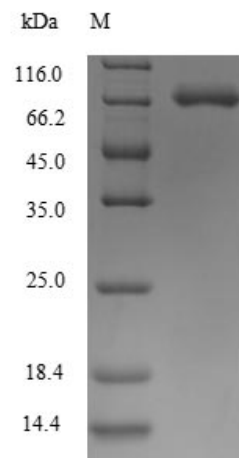
Synonyms SEMA7A; semaphorin-7A; CD108; H Sema K1; H Sema L; sema L; sema K1; semaphorin L; JMH; SEMAL; CDw108; SEMAK1; H-Sema-L; H-SEMA-K1;

 Tel: 1-631-559-9269 1-516-512-3133

 Email: info@creative-biomart.com  Fax: 1-631-938-8127

 45-1 Ramsey Road, Shirley, NY 11967, USA

MGC126692; MGC126696;

Gene ID 8482**mRNA Refseq** NM_001146029**Protein Refseq** NP_001139501**UniProt ID** O75326

(Tris-Glycine gel) Discontinuous SDS-PAGE (reduced) with 5% enrichment gel and 15% separation gel.

 Tel: 1-631-559-9269 1-516-512-3133 Email: info@creative-biomart.com  Fax: 1-631-938-8127 45-1 Ramsey Road, Shirley, NY 11967, USA