

Recombinant Human SEMA7A Protein, His&Fc tagged

Cat. No. SEMA7A-30H Lot. No. (See product label)

SPECIFICATION

Product Overview	Recombinant human SEMA7A (45-648 aa), fused to hlgG-His-tag at C-terminus, was expressed in insect cell and purified by using conventional chromatography techniques.
Species	Human
Source	Insect Cells
ProteinLength	45-648 aa
Description	This gene encodes a member of the semaphorin family of proteins. The encoded preproprotein is proteolytically processed to generate the mature glycosylphosphatidylinositol (GPI)-anchored membrane glycoprotein. The encoded protein is found on activated lymphocytes and erythrocytes and may be involved in immunomodulatory and neuronal processes. The encoded protein carries the John Milton Hagen (JMH) blood group antigens. Mutations in this gene may be associated with reduced bone mineral density (BMD). Alternative splicing results in multiple transcript variants, at least one of which encodes an isoform that is proteolytically processed.
Form	Liquid
AASequence	QGHLRSGPRIFAVWKGHVQDRVDFGQTEPHTVLFHEPGSSSVWVGGRGKVYLF DFPEGKNASVRTVNIGSTKGSCLDKRDCENYITLLERRSEGLLACGTNARHPSCWN LVNGTVVPLGEMRGYAPFSPDENSLVLFEGDEVYSTIRKQEYNGKIPRFRIRGESE

 Tel: 1-631-559-9269 1-516-512-3133

 Email: info@creative-biomart.com  Fax: 1-631-938-8127

 45-1 Ramsey Road, Shirley, NY 11967, USA

LYTSDTVMQNPQFIKATIVHQDQAYDDKIYYFFREDNPDKNPEAPLNVS RVAQLCRG
 DQGGESSLSVSKWNTFLKAMLVCSDAATNKNFNRLQDVFLLPDPSPGQWRDTRVYG
 VFSNPWNYSAVCVYSLGDIDKVFRTSSLKGYHSSLPNPRPGKCLPDQQPIPTETFQV
 ADRHPEVAQRVEPMGPLKTPLFHSKYHYQKVAVHRMQASHGETFHVLYLTDRGTI
 HKVVEPGEQEHSFAFNIMEIQPFRRAAAQITMSLDAERRKLYVSSQWEVSQVPLDLC
 EVYGGGCHGCLMSRDPYCGWDQGRCSISYSSERSVLQSNPAEPHKECPNPKPDK
 APLQKVS LAPNSRYYLSCPMESRHATYSWRHKENVEQSCEPGHQSPNCILFIENLT
 AQQYGHYFCEAQEGSYFREAQHWQLLPEDGIMAEHLLGHACALA

Molecular Mass	95.7 kDa
Endotoxin	< 1 EU/μg by LAL
Purity	> 90% by SDS-PAGE
Storage	Can be stored at +2 to +8 centigrade for 1 week. For long term storage, aliquot and store at -20 to -80 centigrade. Avoid repeated freezing and thawing cycles.
Storage Buffer	Phosphate-Buffered Saline (pH 7.4) containing 10% glycerol
Concentration	0.25 mg/mL (determined by absorbance at 280nm)

GENE INFORMATION

Gene ID	8482
Gene Name	SEMA7A semaphorin 7A, GPI membrane anchor (John Milton Hagen blood group) [Homo sapiens (human)]
Official Symbol	8482

 Tel: 1-631-559-9269 1-516-512-3133

 Email: info@creative-biomart.com  Fax: 1-631-938-8127

 45-1 Ramsey Road, Shirley, NY 11967, USA

Synonyms SEMA7A; semaphorin 7A, GPI membrane anchor (John Milton Hagen blood group); sema domain, immunoglobulin domain (Ig), and GPI membrane anchor, (semaphorin) 7A, sema domain, immunoglobulin domain (Ig), and GPI membrane anchor, (semaphorin) 7A (JMH blood group), SEMAL; semaphorin-7A; CD108; H Sema K1; H Sema L; John Milton Hagen blood group; sema L; sema K1; semaphorin L; semaphorin-L; semaphorin K1; semaphorin-K1; JMH blood group antigen; John Milton Hagen blood group H-Sema K1; john-Milton-Hargen human blood group Ag; sema domain, immunoglobulin domain (Ig), and GPI membrane anchor, 7A; sema domain, immunoglobulin domain (Ig), and GPI membrane anchor, (semaphorin) 7A (JMH blood group); JMH; SEMAL; CDw108; SEMAK1; H-Sema-L; H-SEMA-K1; MGC126692; MGC126696;

mRNA Refseq [NM_003612](#)

Official Symbol 2 [SEMA7A](#)

Gene ID 2 [8482](#)

Gene Name 2 [SEMA7A semaphorin 7A, GPI membrane anchor \(John Milton Hagen blood group\) \[Homo sapiens \(human\) \]](#)

mRNA Refseq 2 [NM_003612](#)


Protein Refseq 2 [NP_003603](#)

MIM 2 [607961](#)

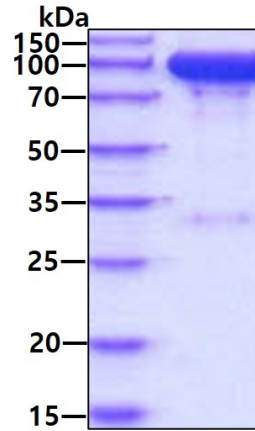
UniProt ID 2 [O75326](#)

 Tel: 1-631-559-9269 1-516-512-3133

 Email: info@creative-biomart.com  Fax: 1-631-938-8127

 45-1 Ramsey Road, Shirley, NY 11967, USA

SDS-PAGE



3 μ g by SDS-PAGE under reducing condition and visualized by coomassie blue stain.

 Tel: 1-631-559-9269 1-516-512-3133

 Email: info@creative-biomart.com  Fax: 1-631-938-8127

 45-1 Ramsey Road, Shirley, NY 11967, USA