

Recombinant Human SEMA7A Protein, Myc/DDK-tagged, C13 and N15-labeled

Cat. No. SEMA7A-3753H **Lot. No.** (See product label)

SPECIFICATION

Product Overview

SEMA7A MS Standard C13 and N15-labeled recombinant protein (NP_003603) with a C-terminal MYC/DDK tag, was expressed in HEK293 cells.

Species

Human

Source

HEK293

Description

This gene encodes a member of the semaphorin family of proteins. The encoded preproprotein is proteolytically processed to generate the mature glycosylphosphatidylinositol (GPI)-anchored membrane glycoprotein. The encoded protein is found on activated lymphocytes and erythrocytes and may be involved in immunomodulatory and neuronal processes. The encoded protein carries the John Milton Hagen (JMH) blood group antigens. Mutations in this gene may be associated with reduced bone mineral density (BMD). Alternative splicing results in multiple transcript variants, at least one of which encodes an isoform that is proteolytically processed.

Molecular Mass

74.8 kDa

AA Sequence

MTPPPPGRAAPSAPRARVPGPPARLGLPLRLRLLLLLLWAAAASAQGHLSGPRIFAV
WKGHVGGQDRVDFGQTEPHTVLFHEPGSSSVWVGGRGKVYLFDFPEGKNASVRTV
NIGSTKGSCLDKRDCENYITLLERRSEGLLACGTNARHPSCWNLVNGTVVPLGEMR
GYAPFSPDENSLVLFEGDEVYSTIRKQEYNGKIPRFRIRGESELYTSDTVMQNPQFI

 Tel: 1-631-559-9269 1-516-512-3133

 Email: info@creative-biomart.com  Fax: 1-631-938-8127

 45-1 Ramsey Road, Shirley, NY 11967, USA

KATIVHQDQAYDDKIYYFFREDNPDKNPEAPLNVS RVAQLCRGDQGGESSLSVSKW
 NTFLKAMLVCSDAATNKNFNRLQDVFLLPDPSGQWRDTRVYGVFSNPWNYSAVCV
 YSLGDIDKVFRTSSLKGYHSSLPNPRPGKCLPDQQPIPTETFQVADRHPEVAQRVEP
 MGPLKTPLFHSKYHYQKVAVHRMQASHGETFHVLYLTDRGTIHKVVEPEGQEHSF
 AFNIMEIQPFRRAAAIQTMSLDAERRKLYVSSQWEVSQVPLDLCEVYGGGCHGCLM
 SRDPYCGWDQGRCSISYSSERSVLQSINPAEPHKECPNPKPDKAPLQKVS LAPNSR
 YYLSCPMESRHATYSWRHKENVEQSCEPGHQSPNCILFIENLTAQQYGHYFCEAQE
 GSYFREAQHWQLLPEDGIMAEHLLGHACALASLWLGVLPTLTLLGLLVHTRTRPLEQ
 KLISEEDLAANDILDYKDDDDKV

Purity > 80% as determined by SDS-PAGE and Coomassie blue staining

Stability Stable for 3 months from receipt of products under proper storage and handling conditions.

Storage Store at -80 centigrade. Avoid repeated freeze-thaw cycles.

Concentration 50 µg/mL as determined by BCA

Storage Buffer 100 mM glycine, 25 mM Tris-HCl, pH 7.3.

GENE INFORMATION

Gene Name SEMA7A semaphorin 7A (John Milton Hagen blood group) [Homo sapiens (human)]

Official Symbol SEMA7A

Synonyms

SEMA7A; semaphorin 7A, GPI membrane anchor (John Milton Hagen blood group); sema domain, immunoglobulin domain (Ig), and GPI membrane anchor, (semaphorin) 7A, sema domain, immunoglobulin domain (Ig), and GPI membrane anchor, (semaphorin) 7A (JMH blood group), SEMAL; semaphorin-7A; CD108; H Sema K1; H

 Tel: 1-631-559-9269 1-516-512-3133

 Email: info@creative-biomart.com  Fax: 1-631-938-8127

 45-1 Ramsey Road, Shirley, NY 11967, USA

Sema L; John Milton Hagen blood group; sema L; sema K1; semaphorin L; semaphorin-L; semaphorin K1; semaphorin-K1; JMH blood group antigen; John Milton Hagen blood group H-Sema K1; john-Milton-Hargen human blood group Ag; sema domain, immunoglobulin domain (Ig), and GPI membrane anchor, 7A; sema domain, immunoglobulin domain (Ig), and GPI membrane anchor, (semaphorin) 7A (JMH blood group); JMH; SEMAL; CDw108; SEMAK1; H-Sema-L; H-SEMA-K1; MGC126692; MGC126696;

Gene ID [8482](#)

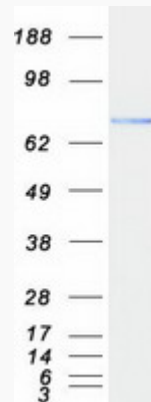
mRNA Refseq [NM_003612](#)

Protein Refseq [NP_003603](#)

MIM [607961](#)

UniProt ID [O75326](#)

SDS-PAGE



 Tel: 1-631-559-9269 1-516-512-3133

 Email: info@creative-biomart.com  Fax: 1-631-938-8127

 45-1 Ramsey Road, Shirley, NY 11967, USA