

Recombinant Human SEMA7A Protein (Met1-Ala648), C-His tagged

Cat. No. SEMA7A-5216H **Lot. No.** (See product label)

SPECIFICATION

Product Overview	Recombinant human SEMA7A (Met1-Ala648) fused with the C-terminal His tag was expressed in Mammalian cells.
Species	Human
Source	Mammalian Cells
ProteinLength	Met1-Ala648
Form	Lyophilized powder/frozen liquid
Molecular Mass	71.28 kDa
Endotoxin	< 1.0 EU/μg of the protein as determined by the LAL method.
Purity	>90% as determined by SDS-PAGE.
Notes	For research use only.
Storage	Use a manual defrost freezer and avoid repeated freeze thaw cycles. Store at 2 to 8 centigrade for one week. Store at -20 to -80 centigrade for twelve months from the date of receipt.
Storage Buffer	Supplied as solution form in PBS or lyophilized from PBS.

 Tel: 1-631-559-9269 1-516-512-3133

 Email: info@creative-biomart.com  Fax: 1-631-938-8127

 45-1 Ramsey Road, Shirley, NY 11967, USA

Reconstitution Reconstitute in sterile water for a stock solution.

Shipping They are shipped out with dry ice/blue ice unless customers require otherwise.

GENE INFORMATION

Gene Name SEMA7A semaphorin 7A, GPI membrane anchor (John Milton Hagen blood group) [Homo sapiens (human)]

Official Symbol SEMA7A

Synonyms SEMA7A; semaphorin 7A, GPI membrane anchor (John Milton Hagen blood group); sema domain, immunoglobulin domain (Ig), and GPI membrane anchor, (semaphorin) 7A, sema domain, immunoglobulin domain (Ig), and GPI membrane anchor, (semaphorin) 7A (JMH blood group), SEMAL; semaphorin-7A; CD108; H Sema K1; H Sema L; John Milton Hagen blood group; sema L; sema K1; semaphorin L; semaphorin-L; semaphorin K1; semaphorin-K1; JMH blood group antigen; John Milton Hagen blood group H-Sema K1; john-Milton-Hagen human blood group Ag; sema domain, immunoglobulin domain (Ig), and GPI membrane anchor, 7A; sema domain, immunoglobulin domain (Ig), and GPI membrane anchor, (semaphorin) 7A (JMH blood group); JMH; SEMAL; CDw108; SEMAK1; H-Sema-L; H-SEMA-K1; MGC126692; MGC126696;

Gene ID 8482

mRNA Refseq NM_001146029

Protein Refseq NP_001139501

MIM 607961

 Tel: 1-631-559-9269 1-516-512-3133

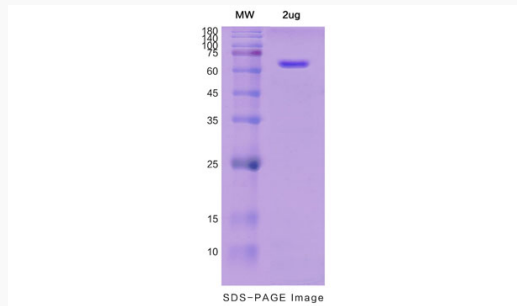
 Email: info@creative-biomart.com  Fax: 1-631-938-8127

 45-1 Ramsey Road, Shirley, NY 11967, USA

UniProt ID

O75326

SDS-PAGE



 Tel: 1-631-559-9269 1-516-512-3133

 Email: info@creative-biomart.com  Fax: 1-631-938-8127

 45-1 Ramsey Road, Shirley, NY 11967, USA