

## Recombinant Human SEMA7A protein, His & T7-tagged

Cat. No. SEMA7A-6973H Lot. No. (See product label)

### SPECIFICATION

<b>Product Overview</b>	Recombinant Human SEMA7A aa. (Tyr242~Arg507 (Accession # O75326)) fused with N-terminal His & T7 tag was produced in E. coli cells.
<b>Species</b>	Human
<b>Source</b>	E.coli
<b>ProteinLength</b>	Tyr242~Arg507
<b>Description</b>	This gene encodes a member of the semaphorin family of proteins. The encoded preproprotein is proteolytically processed to generate the mature glycosylphosphatidylinositol (GPI)-anchored membrane glycoprotein. The encoded protein is found on activated lymphocytes and erythrocytes and may be involved in immunomodulatory and neuronal processes. The encoded protein carries the John Milton Hagen (JMH) blood group antigens. Mutations in this gene may be associated with reduced bone mineral density (BMD). Alternative splicing results in multiple transcript variants, at least one of which encodes an isoform that is proteolytically processed.
<b>Form</b>	Freeze-dried powder
<b>Molecular Mass</b>	Predicted Molecular Mass: 34.0kDa
<b>Endotoxin</b>	<1.0EU per 1ug (determined by the LAL method)

 Tel: 1-631-559-9269 1-516-512-3133

 Email: [info@creative-biomart.com](mailto:info@creative-biomart.com)  Fax: 1-631-938-8127

 45-1 Ramsey Road, Shirley, NY 11967, USA

<b>Purity</b>	>90%
<b>Characteristic</b>	The isoelectric point is 8.2.
<b>Applications</b>	SDS-PAGE; WB; ELISA; IP
<b>Stability</b>	The thermal stability is described by the loss rate. The loss rate was determined by accelerated thermal degradation test, that is, incubate the protein at 37°C for 48h, and no obvious degradation and precipitation were observed. The loss rate is less than 5% within the expiration date under appropriate storage condition.
<b>Storage</b>	Avoid repeated freeze/thaw cycles. Store at 2-8°C for one month. Aliquot and store at -80°C for 12 months.
<b>Storage buffer</b>	Supplied as lyophilized form in 20mM Tris, 150mM NaCl, pH8.0, containing 1mM EDTA, 1mM DTT, 0.01% sarcosyl, 5% trehalose, and preservative.
<b>Reconstitution</b>	Reconstitute in sterile ddH <sub>2</sub> O.

## GENE INFORMATION

<b>Gene Name</b>	SEMA7A semaphorin 7A (John Milton Hagen blood group) [ Homo sapiens (human) ]
<b>Official Symbol</b>	SEMA7A
<b>Synonyms</b>	SEMA7A; semaphorin 7A (John Milton Hagen blood group); JMH; CD108; SEMAL; CDw108; SEMAK1; H-Sema-L; H-SEMA-K1; semaphorin-7A; JMH blood group antigen; John Milton Hagen blood group H-Sema K1; john-Milton-Hargen human blood group Ag; sema K1; sema L; sema domain, immunoglobulin domain (Ig), and GPI membrane anchor, (semaphorin) 7A (JMH blood group); sema domain, immunoglobulin domain (Ig), and GPI membrane anchor, 7A; semaphorin 7A, GPI

 Tel: 1-631-559-9269 1-516-512-3133

 Email: [info@creative-biomart.com](mailto:info@creative-biomart.com)  Fax: 1-631-938-8127

 45-1 Ramsey Road, Shirley, NY 11967, USA

membrane anchor (John Milton Hagen blood group); semaphorin-K1; semaphorin-L

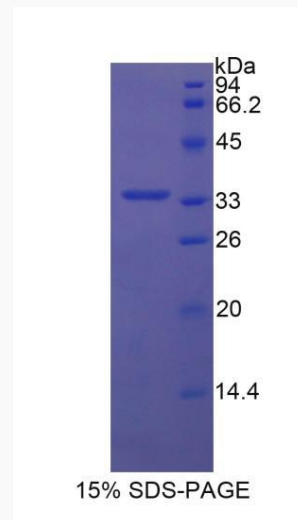
Gene ID 8482

mRNA Refseq NM\_001146029.2

Protein Refseq NP\_001139501.1

UniProt ID O75326

#### SDS-PAGE



Tel: 1-631-559-9269 1-516-512-3133

Email: [info@creative-biomart.com](mailto:info@creative-biomart.com) Fax: 1-631-938-8127

45-1 Ramsey Road, Shirley, NY 11967, USA