

Active Recombinant Human SENP1, GST-tagged

Cat. No. SENP1-686H Lot. No. (See product label)

SPECIFICATION

Product Overview	Recombinant Human SENP1 is produced in <i>E. coli</i> with a GST-tagged.
Species	Human
Source	<i>E. coli</i>
Description	SENP1 fragment has been reported to co-localize with a herpes virus protein ICP0 during early infection. This co-localization may be involved in the ICP0-induced loss of SUMO-1-modified PML in infected cells. Characterization of the localization and regulation of SENP1 has also been reported. SENP1 localization may also be influenced by the expression of proteins that are targets of SUMO-1 modification, such as HDAC4 and PML, which affect the relative levels and localization of SUMO-1 conjugates within the cell.
Activity	This fragment has full de-SUMOylating activity.
Storage	-80°C.

GENE INFORMATION

Gene Name	SENP1 SUMO1/sentrin specific peptidase 1 [<i>Homo sapiens</i>]
Synonyms	SENP1; SUMO1/sentrin specific peptidase 1; SuPr-2; sentrin-specific protease 1; SUMO1/sentrin specific protease 1; sentrin/SUMO-specific protease SENP1; EC 3.4.22.-

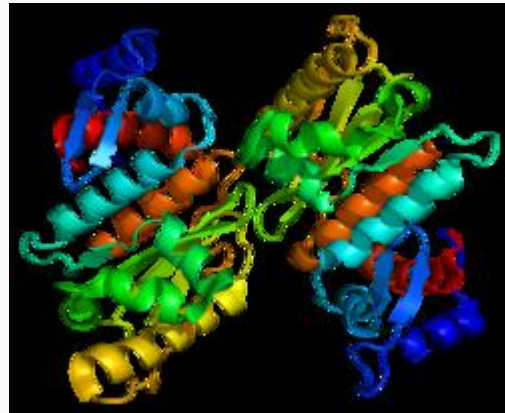
 Tel: 1-631-559-9269 1-516-512-3133

 Email: info@creative-biomart.com  Fax: 1-631-938-8127

 45-1 Ramsey Road, Shirley, NY 11967, USA

Gene ID	29843
mRNA Refseq	NM_014554
Protein Refseq	NP_055369
MIM	612157
UniProt ID	Q9P0U3
Chromosome Location	12q13.1
Function	cysteine-type peptidase activity; endopeptidase activity; peptidase activity

PDB rendering based on 2ckg.



 Tel: 1-631-559-9269 1-516-512-3133

 Email: info@creative-biomart.com  Fax: 1-631-938-8127

 45-1 Ramsey Road, Shirley, NY 11967, USA