

Recombinant Human SENP1, His-tagged

Cat. No. SENP1-687H Lot. No. (See product label)

SPECIFICATION

Product Overview	Recombinant, human SENP1 consisting of aminoacids 419-643 fused at the N-terminus to a His Tag and expressed in E.coli.
Species	Human
Source	E.coli
ProteinLength	419-643 a.a.
Description	SENP1, a nuclear SUMO protease, regulates androgen receptor transactivation by targeting histone deacetylase 1 and c-Jun activity through deSUMOylation of p300. Recent data shows SENP1 is required for HIF-dependent transcription during embryogenesis and in response to hypoxia. The protease is useful in the study of SENP1 endopeptidase and isopeptidase activity and for inhibitor screening.
Formulation	In 50 mM HEPES, 5% glycerol pH 7.4.
Biological activity	EC50: ≥1.42 nM as determined using proSUMO-1 substrate in an endopeptidase assay.
Purity	≥90% by SDS-PAGE
Applications	Enzyme-linked Immunoabsorbent Assay; Western Blot (Recombinant protein); Antibody Production; Protein Array
Storage buffer	50mM Tris-HCl, 10 mM reduced Glutathione, pH=8.0 in the elution buffer.

 Tel: 1-631-559-9269 1-516-512-3133

 Email: info@creative-biomart.com  Fax: 1-631-938-8127

 45-1 Ramsey Road, Shirley, NY 11967, USA

Storage ≤-70°C

GENE INFORMATION

Gene Name SENP1SUMO1/sentrin specific peptidase 1 [Homo sapiens]

Official Symbol SENP1

Synonyms SENP1; SUMO1/sentrin specific peptidase 1; SuPr-2;sentrin-specific protease 1; SUMO1/sentrin specific protease 1;sentrin/SUMO-specific protease SENP1

Gene ID 29843

mRNA Refseq NM_014554

Protein Refseq NP_055369

MIM 612157

UniProt ID Q9P0U3

Chromosome Location 12q13.1

Pathway Androgen Receptor Signaling Pathway; Regulation of Androgen receptor activity

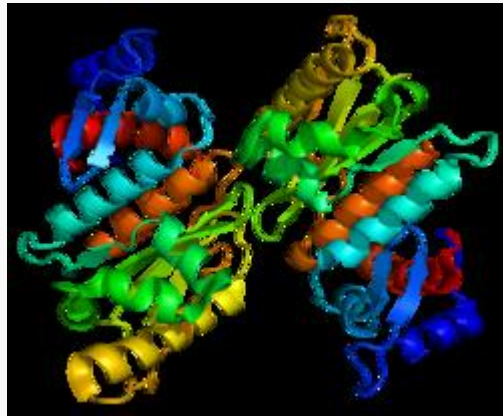
Function cysteine-type peptidase activity; endopeptidase activity; peptidase activity

 Tel: 1-631-559-9269 1-516-512-3133

 Email: info@creative-biomart.com  Fax: 1-631-938-8127

 45-1 Ramsey Road, Shirley, NY 11967, USA

PDB rendering based
on 2ckg.



 Tel: 1-631-559-9269 1-516-512-3133

 Email: info@creative-biomart.com  Fax: 1-631-938-8127

 45-1 Ramsey Road, Shirley, NY 11967, USA