

Active Recombinant Human SENP2 Protein, His tagged

Cat. No. SENP2-29695TH Lot. No. (See product label)

SPECIFICATION

Product Overview	Recombinant SENP2 (360-end) was expressed in E. coli cells using an N-terminal His tag. The SENP2 gene accession number is NM_021627.
Species	Human
Source	E. coli
ProteinLength	360-589 aa
Description	SUMO1 (UBL1; MIM 601912) is a small ubiquitin-like protein that can be covalently conjugated to other proteins. SENP2 is one of a group of enzymes that process newly synthesized SUMO1 into the conjugatable form and catalyze the deconjugation of SUMO1-containing species.
Storage	Store product at -70 centigrade. For optimal storage, aliquot target into smaller quantities after centrifugation and store at recommended temperature. For most favorable performance, avoid repeated handling and multiple freeze/thaw cycles.
Storage Buffer	Supplied as sterile 50 mM sodium phosphate, pH 7.5, 300mM NaCl, 50-200mM imidazole, 0-0.1mM PMSF, 0.2-1.0mM DTT, 10-25% glycerol.
Reference	1. Chung, S.S. et al: Control of adipogenesis by the SUMO specific protease SENP2. Mol. Cell. Biol. 30:2135-2146, 2010. 2. Hang, J. & Dasso, M: Association of the human SUMO-1 protease SENP2 with the nuclear pore. J. Biol. Chem. 277 (22): 19961-6, 2002.

 Tel: 1-631-559-9269 1-516-512-3133

 Email: info@creative-biomart.com  Fax: 1-631-938-8127

 45-1 Ramsey Road, Shirley, NY 11967, USA

GENE INFORMATION

Gene Name SENP2 SUMO specific peptidase 2 [Homo sapiens (human)]

Official Symbol SENP2

Synonyms SENP2; SUMO specific peptidase 2; AXAM2; SMT3IP2; sentrin-specific protease 2; SMT3-specific isopeptidase 2; SUMO1/sentrin/SMT3 specific peptidase 2; SUMO1/sentrin/SMT3 specific protease 2; sentrin (SUMO1) specific peptidase 2; sentrin/SUMO-specific protease SENP2; EC 3.4.22.68

Gene ID 59343

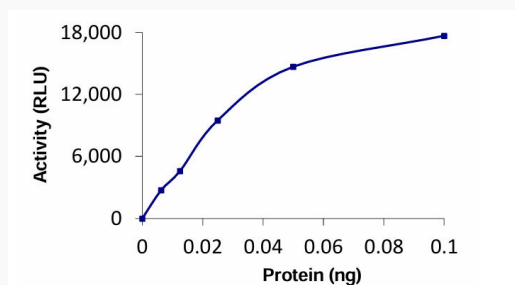
mRNA Refseq NM_021627

Protein Refseq NP_067640

MIM 608261

UniProt ID Q9HC62

Specific Activity

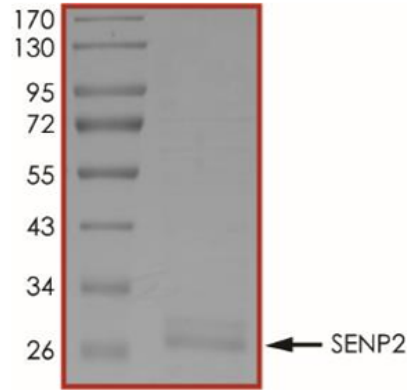


 Tel: 1-631-559-9269 1-516-512-3133

 Email: info@creative-biomart.com  Fax: 1-631-938-8127

 45-1 Ramsey Road, Shirley, NY 11967, USA

Purity



 Tel: 1-631-559-9269 1-516-512-3133

 Email: info@creative-biomart.com  Fax: 1-631-938-8127

 45-1 Ramsey Road, Shirley, NY 11967, USA