

## Recombinant Human SENP2 Protein (Asp363-Leu589), N-His and SUMO tagged

Cat. No. SENP2-6153H Lot. No. (See product label)

### SPECIFICATION

<b>Product Overview</b>	Recombinant human SENP2 (Asp363-Leu589) fused with the N-terminal His and SUMO tag was expressed in E. coli.
<b>Species</b>	Human
<b>Source</b>	E.coli
<b>ProteinLength</b>	Asp363-Leu589
<b>Form</b>	Lyophilized powder/frozen liquid
<b>Molecular Mass</b>	36.97 kDa
<b>Purity</b>	> 90 % as determined by SDS-PAGE
<b>Notes</b>	For research use only.
<b>Storage</b>	Use a manual defrost freezer and avoid repeated freeze thaw cycles. Store at 2 to 8 centigrade for one week. Store at -20 to -80 centigrade for twelve months from the date of receipt.
<b>Storage Buffer</b>	Supplied as solution form in PBS or lyophilized from PBS.
<b>Reconstitution</b>	Reconstitute in sterile water for a stock solution.

 Tel: 1-631-559-9269 1-516-512-3133

 Email: [info@creative-biomart.com](mailto:info@creative-biomart.com)  Fax: 1-631-938-8127

 45-1 Ramsey Road, Shirley, NY 11967, USA

**Shipping** They are shipped out with dry ice/blue ice unless customers require otherwise.

## GENE INFORMATION

**Gene Name** SENP2 SUMO1/sentrin/SMT3 specific peptidase 2 [ Homo sapiens (human) ]

**Official Symbol** SENP2

**Synonyms** SENP2; SUMO1/sentrin/SMT3 specific peptidase 2; SUMO1/sentrin/SMT3 specific protease 2; sentrin-specific protease 2; AXAM2; DKFZp762A2316; KIAA1331; SMT3IP2; SMT3-specific isopeptidase 2; sentrin/SUMO-specific protease SENP2;

**Gene ID** 59343

**mRNA Refseq** NM\_021627

**Protein Refseq** NP\_067640

**MIM** 608261

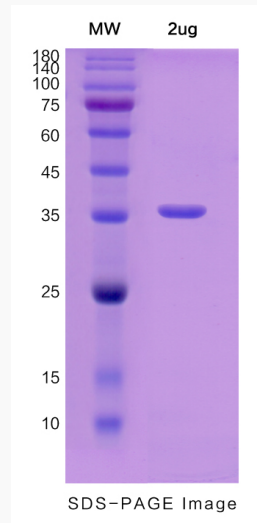
**UniProt ID** Q9HC62

 Tel: 1-631-559-9269 1-516-512-3133

 Email: [info@creative-biomart.com](mailto:info@creative-biomart.com)  Fax: 1-631-938-8127

 45-1 Ramsey Road, Shirley, NY 11967, USA

**SDS-PAGE**



 Tel: 1-631-559-9269 1-516-512-3133

 Email: [info@creative-biomart.com](mailto:info@creative-biomart.com)  Fax: 1-631-938-8127

 45-1 Ramsey Road, Shirley, NY 11967, USA