

Recombinant Human SENP2 protein, His-tagged

Cat. No. SENP2-6155H Lot. No. (See product label)

SPECIFICATION

Product Overview	Recombinant Human SENP2 protein(78-228 aa), fused with N-terminal His tag, was expressed in E. coli.
Species	Human
Source	E. coli
ProteinLength	78-228 aa
Form	The purified protein was lyophilized from sterile phosphate-buffered saline (PBS: 58 mM Na ₂ HPO ₄ , 17 mM NaH ₂ PO ₄ , 68 mM NaCl, pH 7.4). Prior to lyophilization, 5% (w/v) trehalose and 5% (w/v) mannitol were incorporated as cryoprotective excipients. The protein was eluted with a buffer containing 300 mM imidazole.
AASequence	TKPMVTSACNGTRNVAPSGEVFNSSSCELTGSGSWNNMLKLGNKSPNGISDYPKI RVTVTRDQPRRVLPSTFGFTLNSEGCNRRPGRRHSGKNPESSLMWKPQEQAUTE MISEESGKGLRRPHCTVEEGVQKEEREKYRLLERLKESEGH
Purity	80%, by SDS-PAGE.
Storage	Store at 2-8°C for 1-2 weeks. Aliquot and store at -20°C to -80°C for up to 3 months, reconstitution with sterile water and addition of an equal volume of glycerol. Avoid repeat freeze-thaw cycles.
Reconstitution	It is recommended that sterile water be added to the vial to prepare a stock solution of

 Tel: 1-631-559-9269 1-516-512-3133

 Email: info@creative-biomart.com  Fax: 1-631-938-8127

 45-1 Ramsey Road, Shirley, NY 11967, USA

0.25 ug/ul. Centrifuge the vial at 4°C before opening to recover the entire contents.

GENE INFORMATION

Gene Name	SENP2 SUMO1/sentrin/SMT3 specific peptidase 2 [Homo sapiens]
Official Symbol	SENP2
Synonyms	SENP2; SUMO1/sentrin/SMT3 specific peptidase 2; SUMO1/sentrin/SMT3 specific protease 2; sentrin-specific protease 2; AXAM2; DKFZp762A2316; KIAA1331; SMT3IP2; SMT3-specific isopeptidase 2; sentrin/SUMO-specific protease SENP2;
mRNA Refseq	NM_021627
Protein Refseq	NP_067640
MIM	608261
UniProt ID	Q9HC62
Gene ID	59343

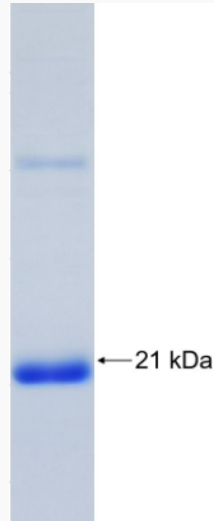
 Tel: 1-631-559-9269 1-516-512-3133

 Email: info@creative-biomart.com  Fax: 1-631-938-8127

 45-1 Ramsey Road, Shirley, NY 11967, USA



SDS-PAGE



Tel: 1-631-559-9269 1-516-512-3133

Email: info@creative-biomart.com Fax: 1-631-938-8127

45-1 Ramsey Road, Shirley, NY 11967, USA