

## Active Recombinant Human SENP2, GST-tagged

Cat. No. SENP2-687H Lot. No. (See product label)

### SPECIFICATION

<b>Product Overview</b>	Recombinant Human SENP2 is produced in <i>E. coli</i> with a GST tag.
<b>Species</b>	Human
<b>Source</b>	<i>E. coli</i>
<b>Protein Length</b>	368-549 aa
<b>Description</b>	SENP2 was discovered both through its homology to other SUMO proteases. When overexpressed in tissue culture cells or under in vitro conditions, the murine SENP2 homologue (Smt3IP2) cleaves conjugates of SUMO-1, SUMO-2, and SUMO-3. Full length human SENP2 associates with nuclear pores in a manner similar to Ulp1 in yeast. This association occurs exclusively with the nuclear face of the pore and requires sequences near the N-terminus of SENP2.
<b>Activity</b>	This fragment has full de-SUMOylating activity.
<b>Storage</b>	-80°C.

### GENE INFORMATION

<b>Gene Name</b>	SENP2 SUMO1/sentrin/SMT3 specific peptidase 2 [ <i>Homo sapiens</i> ]
<b>Synonyms</b>	SENP2; SUMO1/sentrin/SMT3 specific peptidase 2; AXAM2; SMT3IP2; KIAA1331; DKFZp762A2316; sentrin-specific protease 2; SMT3-specific isopeptidase 2;

 Tel: 1-631-559-9269 1-516-512-3133

 Email: [info@creative-biomart.com](mailto:info@creative-biomart.com)  Fax: 1-631-938-8127

 45-1 Ramsey Road, Shirley, NY 11967, USA

sentrin/SUMO-specific protease SENP2; SUMO1/sentrin/SMT3 specific protease 2;  
EC 3.4.22.-

**Gene ID** [59343](#)

**mRNA Refseq** [NM\\_021627](#)

**Protein Refseq** [NP\\_067640](#)

**MIM** [608261](#)

**UniProt ID** [Q9HC62](#)

**Chromosome  
Location** 3q27.2

**Pathway** Wnt signaling pathway

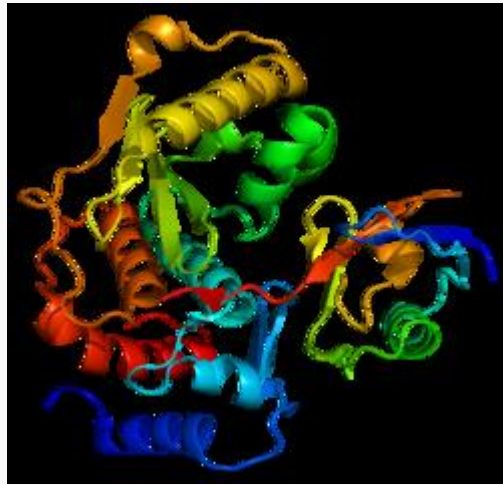
**Function** SUMO-specific protease activity; cysteine-type peptidase activity; peptidase activity;  
protein binding

 Tel: 1-631-559-9269 1-516-512-3133

 Email: [info@creative-biomart.com](mailto:info@creative-biomart.com)  Fax: 1-631-938-8127

 45-1 Ramsey Road, Shirley, NY 11967, USA

PDB rendering based  
on 1tgz.



 Tel: 1-631-559-9269 1-516-512-3133

 Email: [info@creative-biomart.com](mailto:info@creative-biomart.com)  Fax: 1-631-938-8127

 45-1 Ramsey Road, Shirley, NY 11967, USA