

# Recombinant Human SENP7 Protein (Met695-Ala864), N-His tagged

Cat. No. SENP7-6065H Lot. No. (See product label)

## SPECIFICATION

<b>Product Overview</b>	Recombinant human SENP7 (Met695-Ala864) fused with the N-terminal His tag was expressed in E. coli.
<b>Species</b>	Human
<b>Source</b>	E.coli
<b>ProteinLength</b>	Met695-Ala864
<b>Form</b>	Lyophilized powder/frozen liquid
<b>Molecular Mass</b>	18.7 kDa
<b>Purity</b>	> 90 % as determined by SDS-PAGE
<b>Notes</b>	For research use only.
<b>Storage</b>	Use a manual defrost freezer and avoid repeated freeze thaw cycles. Store at 2 to 8 centigrade for one week. Store at -20 to -80 centigrade for twelve months from the date of receipt.
<b>Storage Buffer</b>	Supplied as solution form in PBS or lyophilized from PBS.
<b>Reconstitution</b>	Reconstitute in sterile water for a stock solution.

 Tel: 1-631-559-9269 1-516-512-3133

 Email: [info@creative-biomart.com](mailto:info@creative-biomart.com)  Fax: 1-631-938-8127

 45-1 Ramsey Road, Shirley, NY 11967, USA

**Shipping** They are shipped out with dry ice/blue ice unless customers require otherwise.

## GENE INFORMATION

**Gene Name** SENP7 SUMO1/sentrin specific peptidase 7 [ Homo sapiens (human) ]

**Official Symbol** SENP7

**Synonyms** SENP7; SUMO1/sentrin specific peptidase 7; SUMO1/sentrin specific protease 7; sentrin-specific protease 7; SUMO-1-specific protease 2; sentrin/SUMO-specific protease SENP7; KIAA1707; MGC157730;

**Gene ID** 57337

**mRNA Refseq** NM\_001077203

**Protein Refseq** NP\_001070671

**MIM** 612846

**UniProt ID** Q9BQF6

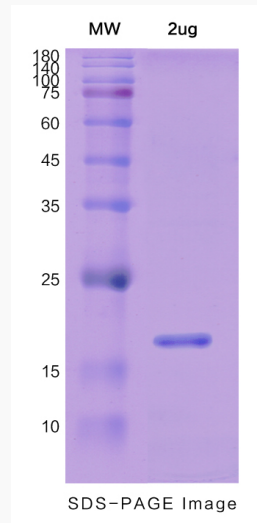
 Tel: 1-631-559-9269 1-516-512-3133

 Email: [info@creative-biomart.com](mailto:info@creative-biomart.com)  Fax: 1-631-938-8127

 45-1 Ramsey Road, Shirley, NY 11967, USA



SDS-PAGE



Tel: 1-631-559-9269 1-516-512-3133

Email: [info@creative-biomart.com](mailto:info@creative-biomart.com) Fax: 1-631-938-8127

45-1 Ramsey Road, Shirley, NY 11967, USA