

Recombinant Human SENP8 Protein, Myc/DDK-tagged, C13 and N15-labeled

Cat. No. SENP8-6271H Lot. No. (See product label)

SPECIFICATION

Product Overview	SENP8 MS Standard C13 and N15-labeled recombinant protein (NP_660205) with a C-terminal MYC/DDK tag, was expressed in HEK293 cells.
Species	Human
Source	HEK293
Description	This gene encodes a cysteine protease that is a member of the sentrin-specific protease family. The encoded protein is involved in processing and deconjugation of the ubiquitin-like protein termed, neural precursor cell expressed developmentally downregulated 8. Alternate splicing results in multiple transcript variants.
Molecular Mass	24.1 kDa
AA Sequence	MDPVVLSYMDSLLRQSDVSLDPPSWLNDHIIGFAFEYFANSQFHDCSDHVSFISPE VTQFIKCTSNPAEIAMFLEPLDLPNKRVVFLAINDNSNQAAGGTHWSLLVYLQDKNSF FHYDSHSRSNSVHAKQVAEKLEAFLGRKGDKLA FVEEKAPAQQNSYDCGMYVICNT EALCQNFFRQQTESLLQLLTPAYITKKRGEWKDLIATLAKKTRTRPLEQKLISEEDLAA NDILDYKDDDDKV
Purity	> 80% as determined by SDS-PAGE and Coomassie blue staining
Stability	Stable for 3 months from receipt of products under proper storage and handling conditions.

 Tel: 1-631-559-9269 1-516-512-3133

 Email: info@creative-biomart.com  Fax: 1-631-938-8127

 45-1 Ramsey Road, Shirley, NY 11967, USA

Storage	Store at -80 centigrade. Avoid repeated freeze-thaw cycles.
Concentration	50 µg/mL as determined by BCA
Storage Buffer	100 mM glycine, 25 mM Tris-HCl, pH 7.3.
GENE INFORMATION	
Gene Name	SEN8 SUMO/sentrin specific peptidase family member 8 [Homo sapiens (human)]
Official Symbol	SEN8
Synonyms	SEN8; SUMO/sentrin specific peptidase family member 8; protease, cysteine, 2 (NEDD8 specific), PRSC2, SUMO/sentrin specific protease family member 8; sentrin-specific protease 8; DEN1; deneddylase 1; HsT17512; NEDD8 specific protease 1; NEDP1; sentrin/SUMO specific protease SENP8; deneddylase-1; protease, cysteine 2; NEDD8-specific protease 1; NEDD8 specific-protease cysteine 2; SUMO sentrin specific protease family member 8; PRSC2;
Gene ID	123228
mRNA Refseq	NM_145204
Protein Refseq	NP_660205
MIM	608659
UniProt ID	Q96LD8

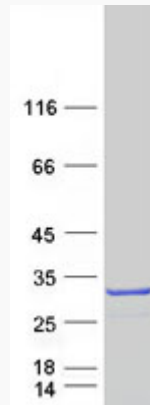
 Tel: 1-631-559-9269 1-516-512-3133

 Email: info@creative-biomart.com  Fax: 1-631-938-8127

 45-1 Ramsey Road, Shirley, NY 11967, USA



SDS-PAGE



Tel: 1-631-559-9269 1-516-512-3133

Email: info@creative-biomart.com Fax: 1-631-938-8127

45-1 Ramsey Road, Shirley, NY 11967, USA