

## Recombinant Human SEPP1 Protein (20-381 aa), His-tagged

Cat. No. SEPP1-802H Lot. No. (See product label)

### SPECIFICATION

**Product Overview** Recombinant Human SEPP1 Protein (20-381 aa) is produced by E. coli expression system. This protein is fused with a 6xHis tag at the N-terminal. Protein Description: Full Length of Mature Protein.

**Species** Human

**Source** E.coli

**ProteinLength** 20-381 aa

**Description** Might be responsible for some of the Extracellular domain antioxidant defense properties of selenium or might be involved in the transport of selenium. May supply selenium to tissues such as brain and testis.

**Form** Tris-based buffer, 50% glycerol

**Molecular Mass** 44.6 kDa

**AA Sequence**

```
ESQDQSSLCKQPPAWSIRDQDPMLNSNGSVTVVALLQASSYLCILQASKLEDLRVKL
KKEGYSNISYIVVNHQGISSRLKYTHLKNKVSEHIPVYQQEENQTDVWTLNLSKDD
FLIYDRGRLVYHLGLPFSFLTFPYVEEAIKIAYCEKCKGNCSLTTLKDEDFCKRVSLA
TVDKTVETPSPHYHHEHHHGHGHQHLGSSSELSSENQQPGAPNAPTHPAPPGLHHHH
KHKGQHRQGH PENRDMPASEDLQDLQKKLCRKRCINQLLCKLPTDSELAPRSSCC
HCRHLIFEKTGSAITSQCKENLPSLCSSQGLRAEENITESCQSRLPPAASQISQQLIPT
EASASSRSKNQAKKSESPSN
```

 Tel: 1-631-559-9269 1-516-512-3133

 Email: [info@creative-biomart.com](mailto:info@creative-biomart.com)  Fax: 1-631-938-8127

 45-1 Ramsey Road, Shirley, NY 11967, USA

<b>Purity</b>	> 90% as determined by SDS-PAGE.
<b>Notes</b>	Repeated freezing and thawing is not recommended. Store working aliquots at 4 centigrade for up to one week.
<b>Storage</b>	The shelf life is related to many factors, storage state, buffer ingredients, storage temperature and the stability of the protein itself. Generally, the shelf life of liquid form is 6 months at -20 centigrade/-80 centigrade. The shelf life of lyophilized form is 12 months at -20 centigrade/-80 centigrade.
<b>Concentration</b>	A hardcopy of COA with concentration instruction is sent along with the products.

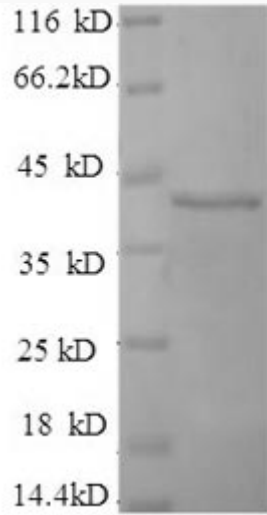
## GENE INFORMATION

<b>Gene Name</b>	SEPP1 selenoprotein P, plasma, 1 [ Homo sapiens ]
<b>Official Symbol</b>	SEPP1
<b>Synonyms</b>	SEPP1; selenoprotein P; SeP; SELP;
<b>Gene ID</b>	6414
<b>mRNA Refseq</b>	NM_001085486
<b>Protein Refseq</b>	NP_001078955
<b>MIM</b>	601484
<b>UniProt ID</b>	P49908

 Tel: 1-631-559-9269 1-516-512-3133

 Email: [info@creative-biomart.com](mailto:info@creative-biomart.com)  Fax: 1-631-938-8127

 45-1 Ramsey Road, Shirley, NY 11967, USA



(Tris-Glycine gel) Discontinuous SDS-PAGE (reduced) with 5% enrichment gel and 15% separation gel.

 Tel: 1-631-559-9269 1-516-512-3133

 Email: [info@creative-biomart.com](mailto:info@creative-biomart.com)  Fax: 1-631-938-8127

 45-1 Ramsey Road, Shirley, NY 11967, USA