

Recombinant Human SEPTIN2 protein, His-tagged

Cat. No. SEPTIN2-33H Lot. No. (See product label)

SPECIFICATION

Product Overview	Recombinant human Septin2 protein (1-361 aa), fused to His-tag at N-terminus, was expressed in E. coli and purified by using conventional chromatography techniques.
Species	Human
Source	E.coli
ProteinLength	381
Description	<p>Filament-forming cytoskeletal GTPase. Forms a filamentous structure with SEPTIN12, SEPTIN6, SEPTIN2 and probably SEPTIN4 at the sperm annulus which is required for the structural integrity and motility of the sperm tail during postmeiotic differentiation. Required for normal organization of the actin cytoskeleton. Plays a role in the biogenesis of polarized columnar-shaped epithelium by maintaining polyglutamylated microtubules, thus facilitating efficient vesicle transport, and by impeding MAP4 binding to tubulin. Required for the progression through mitosis. Forms a scaffold at the midplane of the mitotic spindle required to maintain CENPE localization at kinetochores and consequently chromosome congression. During anaphase, may be required for chromosome segregation and spindle elongation. Plays a role in ciliogenesis and collective cell movements. In cilia, required for the integrity of the diffusion barrier at the base of the primary cilium that prevents diffusion of transmembrane proteins between the cilia and plasma membranes: probably acts by regulating the assembly of the tectonic-like complex (also named B9 complex) by localizing TMEM231 protein. May play a role in the internalization of 2 intracellular</p>

 Tel: 1-631-559-9269 1-516-512-3133

 Email: info@creative-biomart.com  Fax: 1-631-938-8127

 45-1 Ramsey Road, Shirley, NY 11967, USA

	microbial pathogens, <i>Listeria monocytogenes</i> and <i>Shigella flexneri</i> .
Form	Liquid
Molecular Mass	43.6 kDa
AA Sequence	MSKQQPTQFINPETPGYVGFANLPNQVHRKSVKKGFEFTLMVVGESGLGKSTLINSL FLTDLYPERVISGAAEKIERTVQIEASTVEIEERGVLRLTVVDTPGYGDAINCRDCFK TIISYIDEQFERYLHDESGLNRRHIIDNRVHCCFYFISPFHGLKPLDVAFMKAIHNKV NIVPVIKADTLTKERERLKKRILDEIEEHNIKIYHLPDAESDEDEDFKEQTRLLKASIP FSVVGSNQLIEAKGKKVRGRLYPWGVVEVENPEHNDFLKLRMLITHMQDLQEVTQ DLHYENFRSERLKRGGGRKVENEDMNKDQILLEKEAELRRMQEMIARMQAQMOMQ MQGGDGDGGALGHHV
Purity	> 90% by SDS-PAGE
Applications	SDS-PAGE
Storage	Can be stored at +2 to +8 centigrade for 1 week. For long term storage, aliquot and store at -20 to -80 centigrade. Avoid repeated freezing and thawing cycles.
Concentration	0.25 mg/mL (determined by Bradford assay)
Storage Buffer	20mM Tris-HCl buffer (pH 8.0) containing 40% glycerol, 0.1M NaCl, 1mM DTT

GENE INFORMATION

Gene Name	SEPTIN2 septin 2 [<i>Homo sapiens</i> (human)]
Official Symbol	SEPTIN2

 Tel: 1-631-559-9269 1-516-512-3133

 Email: info@creative-biomart.com  Fax: 1-631-938-8127

 45-1 Ramsey Road, Shirley, NY 11967, USA

Synonyms SEPTIN2; septin 2; DIFF6; NEDD5; SEPT2; NEDD-5; Pnutl3; hNedd5; septin-2; epididymis secretory sperm binding protein; neural precursor cell expressed, developmentally down-regulated 5

Gene ID 4735

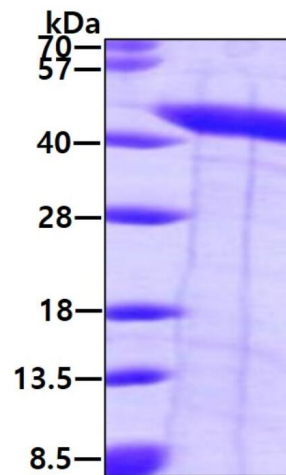
mRNA Refseq NM_006155

Protein Refseq NP_006146

MIM 601506

UniProt ID Q15019

SDS-PAGE



3 µg by SDS-PAGE under reducing condition and visualized by coomassie blue stain.

 Tel: 1-631-559-9269 1-516-512-3133

 Email: info@creative-biomart.com  Fax: 1-631-938-8127

 45-1 Ramsey Road, Shirley, NY 11967, USA