

# Recombinant Full Length Human SERBP1 Protein, C-Flag-tagged

**Cat. No.** SERBP1-526HFL    **Lot. No.** (See product label)

## SPECIFICATION

<b>Product Overview</b>	Recombinant Full Length Human SERBP1 Protein, fused to Flag-tag at C-terminus, was expressed in Mammalian cells.
<b>Species</b>	Human
<b>Source</b>	Mammalian Cells
<b>Description</b>	Enables SUMO binding activity; mRNA 3'-UTR binding activity; and ribosome binding activity. Involved in PML body organization. Located in cytosol and nucleus.
<b>Form</b>	25 mM Tris HCl, pH 7.3, 100 mM glycine, 10% glycerol.
<b>Molecular Mass</b>	44.8 kDa
<b>AA Sequence</b>	<p>MPGHLQEGFGCVVTNRFDQLFDDESDPFEVLKAAENKKKEAGGGGVGGPGAKSA            AQAAAQTNSNAAGKQL RKESQKDRKNPLPPSVGVVDKKEETQPPVALKKEGIRRV            GRRPDQQLQGEGKIIDRRPERRPPRERRFEK PLEEKGEGGEFSVDRPIIDRPIRGR            GGLGRGRGGRGRGMGRGDGFDSDRGKREFDRHSGSDRSSFSHYSGL KHEDKRG            GSGSHNWGTVKDELTESPKYIQKQISYNYSDDLQSNVTEETPEGEEHHPVADTENK            ENEVEEV KEEGPKEMTLDEWKAIQNKDRAKVEFNIRKPNEGADGQWKKGFVLHKS            KSEEAHAEDSVMDHHRKPAND            ITSQLEINFGDLGRPGRGGRGGRGGRGGRPNRGSRTDKSSASAPDVDDPEAFP            ALATRTRPLEQKLISEEDLAANDILDYKDDDDKV</p>

 Tel: 1-631-559-9269    1-516-512-3133

 Email: [info@creative-biomart.com](mailto:info@creative-biomart.com)     Fax: 1-631-938-8127

 45-1 Ramsey Road, Shirley, NY 11967, USA

<b>Purity</b>	> 80% as determined by SDS-PAGE and Coomassie blue staining.
<b>Stability</b>	Stable for 12 months from the date of receipt of the product under proper storage and handling conditions. Avoid repeated freeze-thaw cycles.
<b>Storage</b>	Store at -80 centigrade.
<b>Concentration</b>	>50 ug/mL as determined by microplate BCA method.
<b>Preparation</b>	Recombinant protein was captured through anti-DDK affinity column followed by conventional chromatography steps.
<b>Full Length</b>	Full L.

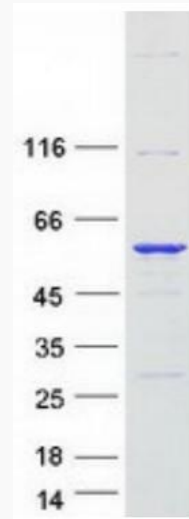
## GENE INFORMATION

<b>Gene Name</b>	SERBP1 SERPINE1 mRNA binding protein 1 [ Homo sapiens (human) ]
<b>Official Symbol</b>	SERBP1
<b>Synonyms</b>	CGI-55; CHD3IP; HABP4L; PAIRBP1; PAI-RBP1
<b>Gene ID</b>	26135
<b>mRNA Refseq</b>	NM_001018067.2
<b>Protein Refseq</b>	NP_001018077.1
<b>MIM</b>	607378
<b>UniProt ID</b>	Q8NC51

 Tel: 1-631-559-9269 1-516-512-3133

 Email: [info@creative-biomart.com](mailto:info@creative-biomart.com)  Fax: 1-631-938-8127

 45-1 Ramsey Road, Shirley, NY 11967, USA



Coomassie blue staining of purified SERBP1 protein.

 Tel: 1-631-559-9269 1-516-512-3133

 Email: [info@creative-biomart.com](mailto:info@creative-biomart.com)  Fax: 1-631-938-8127

 45-1 Ramsey Road, Shirley, NY 11967, USA