

Recombinant Human SERGEF Protein, GST-tagged

Cat. No. SERGEF-2530H Lot. No. (See product label)

SPECIFICATION

Product Overview	Human DELGEF partial ORF (NP_036271, 240 a.a. - 337 a.a.) recombinant protein with GST-tag at N-terminal.
Species	Human
Source	Wheat Germ
Description	SERGEF (Secretion Regulating Guanine Nucleotide Exchange Factor) is a Protein Coding gene. GO annotations related to this gene include Ran guanyl-nucleotide exchange factor activity. An important paralog of this gene is IBTK.
Molecular Mass	36.52 kDa
AA Sequence	KHGQLANEAAFLPVPQKIEAHCFQNEKVTAIWSGWTHLVAQTETGKMFTWGRADY GQLGRKLETYEGWKLEKQDSFLPCSRPPNSMPSSPHCLTGATE
Applications	Enzyme-linked Immunoabsorbent Assay Western Blot (Recombinant protein) Antibody Production Protein Array
Notes	Best use within three months from the date of receipt of this protein.
Storage	Store at -80 centigrade. Aliquot to avoid repeated freezing and thawing.

 Tel: 1-631-559-9269 1-516-512-3133

 Email: info@creative-biomart.com  Fax: 1-631-938-8127

 45-1 Ramsey Road, Shirley, NY 11967, USA

Storage Buffer 50 mM Tris-HCl, 10 mM reduced Glutathione, pH=8.0 in the elution buffer.

GENE INFORMATION

Gene Name SERGEF secretion regulating guanine nucleotide exchange factor [Homo sapiens]

Official Symbol SERGEF

Synonyms SERGEF; secretion regulating guanine nucleotide exchange factor; secretion-regulating guanine nucleotide exchange factor; DelGEF; Gnefr; guanine nucleotide exchange factor-related protein; deafness locus associated putative guanine nucleotide exchange factor; deafness locus-associated putative guanine nucleotide exchange factor; DELGEF;

Gene ID 26297

mRNA Refseq NM_012139

Protein Refseq NP_036271

MIM 606051

UniProt ID Q9UGK8

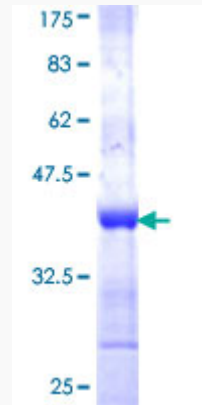
 Tel: 1-631-559-9269 1-516-512-3133

 Email: info@creative-biomart.com  Fax: 1-631-938-8127

 45-1 Ramsey Road, Shirley, NY 11967, USA

Quality Control

Testing:



12.5% SDS-PAGE Stained with Coomassie Blue.

 Tel: 1-631-559-9269 1-516-512-3133

 Email: info@creative-biomart.com  Fax: 1-631-938-8127

 45-1 Ramsey Road, Shirley, NY 11967, USA