

Recombinant Human SERGEF protein, His-tagged

Cat. No. SERGEF-3858H Lot. No. (See product label)

SPECIFICATION

Product Overview	Recombinant Human SERGEF protein(1-209 aa), fused with N-terminal His tag, was expressed in E.coli.
Species	Human
Source	E.coli
ProteinLength	1-209 aa
Form	The purified protein was lyophilized from sterile phosphate-buffered saline (PBS: 58 mM Na ₂ HPO ₄ , 17 mM NaH ₂ PO ₄ , 68 mM NaCl, pH 7.4). Prior to lyophilization, 5% (w/v) trehalose and 5% (w/v) mannitol were incorporated as cryoprotective excipients.
AASequence	MEREPSASEAAPAAAALFAWGANSYGQLGLGHKEDVLLPQQQLNDFCKPRSVRRITG GGGHSVVTDGGDLFVCGLNKGQLGLGHTEDIPYFTPCKSLFGCPIQQVACGWD FTIMLTENGQVLSGCSNSFGQLGVPHGPRRCVVPQAIELHKEKVVVIAAGLRHAVAA TASGIVFQWGTGLASCGRRLCPGQTLPLFFTAKEPSRVTGL
Purity	80%, by SDS-PAGE with Coomassie Brilliant Blue staining.
Storage	Store at 2-8°C for 1-2 weeks. Aliquot and store at -20°C to -80°C for up to 3 months, reconstitution with sterile water and addition of an equal volume of glycerol. Avoid repeat freeze-thaw cycles.

 Tel: 1-631-559-9269 1-516-512-3133

 Email: info@creative-biomart.com  Fax: 1-631-938-8127

 45-1 Ramsey Road, Shirley, NY 11967, USA

Reconstitution

Dissolve the product in 200 µl sterile water to achieve a working concentration of 0.25 g/µl. If experimental compatibility allows, mix the aqueous solution with an equal volume of glycerol (1:1 ratio) after initial reconstitution.

GENE INFORMATION

Gene Name

SERGEF secretion regulating guanine nucleotide exchange factor [Homo sapiens]

Official Symbol

SERGEF

Synonyms

SERGEF; secretion regulating guanine nucleotide exchange factor; secretion-regulating guanine nucleotide exchange factor; DelGEF; Gnefr; guanine nucleotide exchange factor-related protein; deafness locus associated putative guanine nucleotide exchange factor; deafness locus-associated putative guanine nucleotide exchange factor; DELGEF;

Gene ID

26297

mRNA Refseq

NM_012139

Protein Refseq

NP_036271

MIM

606051

UniProt ID

Q9UGK8

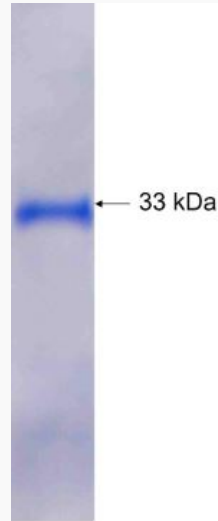
 Tel: 1-631-559-9269 1-516-512-3133

 Email: info@creative-biomart.com  Fax: 1-631-938-8127

 45-1 Ramsey Road, Shirley, NY 11967, USA



SDS-PAGE



Tel: 1-631-559-9269 1-516-512-3133

Email: info@creative-biomart.com Fax: 1-631-938-8127

45-1 Ramsey Road, Shirley, NY 11967, USA